

2013

GENUINE PARTS, ACCESSORIES & RIDING GEAR



SEA-DOO





THE FUN LASTS LONGER WHEN **SAFETY** IS IN THE DRIVER'S SEAT.

When you're the driver of a personal watercraft, you need to take the safety of your passengers personally.

As the "captain," you are not only responsible for adhering to the safety rules respecting personal watercraft use, but also for ensuring your passengers are wearing the appropriate protective equipment and riding gear.

First of all, you and your passengers are required to wear an approved personal flotation device (PFD) certified for use with a personal watercraft.

Also, a wetsuit and/or neoprene bottoms will provide adequate protection to the lower part of the body. You can suffer severe internal injuries if water is forced into a lower body cavity as a result of falling in the water or being near the jet thrust nozzle. Remember that normal swimwear cannot appropriately protect against forceful water entry.

Finally, extra protective equipment such as footwear, gloves and goggles is also recommended. The fun lasts longer when safety is in the driver's seat.

You can find all of these items at an authorized Sea-Doo dealer.

2013

RIDING GEAR

PFDs, Wetsuits & Rashguards

Musclecraft	2
Sport	6
Luxury Performance	10
Recreation	12
Kidswear	15
PFDs Chart	16

Technical Gear	18
Sportswear	20
Sizing Chart	24

OFFICIAL LICENSED PRODUCTS

Tubes & Accessories	26
Seascooters & Accessories	27
Cool Products	28

PARTS & ACCESSORIES

Watercraft Accessories	30
Sea-Doo Move Trailers	44
Parts	50
XPS Engine Oils & Maintenance Products	54



Products in this catalog will be available for purchase at your authorized Sea-Doo dealer and online at store.sea-doo.com in December 2012.

For advertising purposes, some scenes depicted in this brochure include professional riders and operators executing under ideal and/or controlled conditions. Do not attempt any of these or any other risky maneuvers if they're beyond your level of riding ability, as well as your understanding and respect for the performance of your Sea-Doo watercraft. **RIDE SMART FROM THE START.** Always ride responsibly and safely. Follow all instructional and safety materials. BRP recommends a minimum operator age of 16 years old for riding a watercraft. Always wear appropriate protective clothing for your type of boating use, including a Coast Guard approved personal flotation device. Always remember that riding and alcohol/drugs don't mix. Operate your craft keeping a safe distance between yourself and others. Always observe applicable local laws and regulations. Because of its ongoing commitment to product quality and innovation, BRP reserves the right, at any time, to discontinue or change specifications, prices, designs, features, models or equipment without incurring any obligations. Some models depicted herein may include optional equipment.

Prices are based on Manufacturer Suggested Retail Prices. Dealers may sell for a different price. Taxes not included. In the U.S.A., products are distributed by BRP US Inc. In Canada, products are distributed by Bombardier Recreational Products Inc. ® are registered trademarks and TM and the BRP logo are trademarks of Bombardier Recreational Products Inc. or its affiliates. * is a trademark of Bombardier Inc. used under license. Velcro is a registered trademark of Velcro Industries. Clarino is a trademark of Kuraray Co. Ltd. Lycra is a trademark of E.I. DuPont de Nemours & Co. GTX is a registered trademark of Castrol Limited, used under license. 3M is a registered trademark of 3M Canada. Garmin is a registered trademark of Garmin Ltd. NGK is a registered trademark of NGK Spark Plugs, Ltd. YUASA is a registered trademark of YUASA Batteries Inc. All other company and/or product names are trademarks of their respective holders. © 2012 BRP Inc. All rights reserved. Printed in Canada.

MUSCLECRAFT



Multifunctional gear for riders who like to ride from calm to choppy waters. Stretchy and padded to deliver the protection needed for ultimate rides.



YELLOW (10)



ORANGE (12)

Loop at back neck
for goggle-to-PFD
attachment cord.



NEOPRENE
is flexible for ease of
movement and does
a great job retaining
body heat.

FORCE PULLOVER

For riders looking for a technical and fitted PFD. The Force collection is warmer, fits better, is more comfortable and offers a greater ease of movement.

FORCE PULLOVER PFD

Ultra-durable neoprene outer shell and lining. Soft PVC foam inserts for maximum comfort. Anatomically cut. 2 woven straps with quick release buckles. Strategically-placed mesh drain panel. Armholes cut large for riding comfort. Heavy-duty side zipper. D-ring for floating lanyard.

900353 • XS/S, M, L, XL, 2XL/3XL • Yellow (10), Orange (12)

\$124.99



YELLOW (10)



ORANGE (12)

Without pullover jacket

MEN'S PERFORMANCE X-TEAM COMBO SUIT

3/2 mm neoprene X-Team pullover jacket and sleeveless wetsuit combo. Underarm and side panels with stretch neoprene. Back zip on john. Embossed inner elbow for ease of bending.

900237 • S, M, L, XL, 2XL • Yellow (10), Orange (12)

\$219.99



WHITE (01)



YELLOW (10)



ORANGE (12)

MEN'S X-TEAM FULLSUIT

Grooved skin shoulders and side panels. Stretch neoprene underarms, back of legs and sleeves. Embossed back of knees for ease of bending. Textured shinpads and kneepads. Back zipper closure.

5 mm lower body neoprene / 4 mm sleeves.

Fine mesh skin front & back panels made especially for cool weather.

5/4 mm neoprene

713700 • S, M, L, XL, 2XL • White (01)

\$264.99

3/2 mm neoprene

713800 • S, M, L, XL, 2XL • White (01)

\$239.99

MEN'S X-TEAM SPRINGSUIT

2 mm neoprene wetsuit with X-Team logo on front panel. Shoulder panels with stretch neoprene. Collar with adjustable Velcro® for better comfort. Zip stash pocket.

900234 • S, M, L, XL, 2XL • Yellow (10), Orange (12)

\$119.99





MEN'S X-TEAM NEOPRENE RIDING JACKET

2 mm neoprene X-Team jacket. 2 way front zipper. Embossed inner elbow for ease of bending. Front pockets. Plush lined hood. Back slit in hem for ease of sitting. Can be worn independently or over a PFD.

900233 • M, L, XL, 2XL • Yellow (10), Orange (12)
\$154.99



MEN'S X-TEAM PRO RASHGUARD

Rashguard with SPF 50 UV protection. Mock turtleneck collar design. Boardshort connector. 8 oz. (227 g) Nylon / Spandex.

900240 • S, M, L, XL, 2XL • Yellow (10), Orange (12)
\$46.99

SPORT



Gear designed to fit the moment, whether you are riding on leisure outings, pulling a wakeboarder/waterskier or riding crouched to rocket through waves and turns.





FREEWAVE

A more fitted and technical PFD. Offers greater ease of movement, better comfort and more warmth. Ultra-durable neoprene outer shell. Soft, beveled PVC foam inserts. 2 woven straps with quick release buckles. Strategically-placed mesh drain panels. Armholes cut large for riding comfort. Heavy-duty front zipper. Split tail comfort design. D-ring for floating lanyard.



MEN'S FREEWAVE PFD

900348 • S, M, L, XL, 2XL • Orange (12), Red (30), Black (90)
\$94.99



LADIES' FREEWAVE PFD

900349 • S, M, L, XL, 2XL • Red (30), Green (70), Black (90)
\$94.99



MEN'S RASHGUARD

Rashguard with SPF 50 UV protection. Mock turtleneck collar design. Boardshort connector. 6 oz. (170 g) Nylon / Spandex.
900229 • S, M, L, XL, 2XL • Orange (12), Red (30), Green (70)
\$31.99



MEN'S PRO RASHGUARD

Rashguard with SPF 50 UV protection. Mock turtleneck collar design. Boardshort connector. 8 oz. (227 g) Nylon / Spandex.
900222 • S, M, L, XL, 2XL • White (01)
\$46.99

MEN'S WAKE SHIRT

1 mm stretch neoprene. Protects against wind chill.
900220 • S, M, L, XL, 2XL • Black (90)
\$91.99

MEN'S NEOPRENE SHORT

2 mm neoprene. Elastic waist with drawstring.
900224 • S, M, L, XL, 2XL, 3XL • Black (90)
\$56.99





LADIES' RASHGUARD

Rashguard with SPF 50 UV protection. Mock turtleneck collar design. Boardshort connector. 6 oz. (170 g) Nylon / Spandex.

900230 • S, M, L, XL, 2XL • White (01), Red (30), Green (70)

\$31.99



LADIES' PRO RASHGUARD

Rashguard with SPF 50 UV protection. Mock turtleneck collar design. Boardshort connector. 8 oz. (227 g) Nylon / Spandex.

900223 • S, M, L, XL, 2XL • White (01)

\$46.99

LADIES' WAKE SHIRT

1 mm stretch neoprene. Protects against wind chill.

900221 • 6, 8, 10, 12, 14 • Black (90)

\$91.99

LADIES' NEOPRENE SHORT

2 mm neoprene. Elastic waist with drawstring. Seat and crotch seams are reinforced with heat tape.

900225 • S, M, L, XL • Black (90)

\$46.99

LUXURY PERFORMANCE



For quick leisure riders and short cruisers looking for a form fitted balance of dryness and ease of movement, where the compass always points to comfort.





BLACK (90)



BLACK (90)



Interior EVA molding that keeps the PFD surface away from the skin.

ECOPRENE

Ecoprene and neoprene may look and sound the same, but Ecoprene is 30% lighter, more breathable, faster drying, stays much cooler and is less water absorbant than the other.

AIRFLOW

Eco-friendly. Softer, lighter, more durable vest interior constructed of 100% PVC-free Biofoam. Breathable and water repellent. Ecoprene outer shell and lining. 2 woven straps with quick release buckles. Side and center back glideskin panels. Heavy-duty front zipper. Loop at back neck for goggle-to-PFD attachment cord. D-ring for floating lanyard.

MEN'S AIRFLOW PFD

900351 • S, M, L, XL, 2XL

• Black (90)

\$124.99

LADIES' AIRFLOW PFD

900352 • S, M, L, XL, 2XL

• Black (90)

\$124.99



BLACK (90)

MEN'S DELUXE NEOPRENE RIDING JACKET

2 mm neoprene jacket. 2 way front zipper. Embossed inner elbow for ease of bending. Front pockets. Plush lined hood. Back slit in hem for ease of sitting. Can be worn independently or over a PFD.

900232 • M, L, XL, 2XL • Black (90)

\$154.99



BLACK (90)



BLACK (90)

DELUXE COMBO SUIT

3/2 mm neoprene. Luxury jacket with front zipper and sleeveless wetsuit combo. Underarm and side panels with stretch neoprene. Embossed back of knees for ease of bending. Textured shinpads. Velcro shoulder closure.

MEN'S

900235 • S, M, L, XL, 2XL

• Black (90)

\$219.99

LADIES'

900236 • 6, 8, 10, 12, 14

• Black (90)

\$219.99

RECREATION



Smart-value apparel
for watercrafting and
general water fun.
Perfect for short leisure
rides or cruises with
friends and family.





MOTION

Super-duty nylon outer shell. Combination of PVC and polyethylene foam inserts. Seat contour system for increased comfort while seated. 4 woven straps with quick release buckles. Reinforced seams with vinyl piping. Armholes cut large for riding comfort. D-ring for floating lanyard.



RED (30)



GREEN (70)



BLACK (90)

MEN'S MOTION PFD

900346 • S, M, L, XL, 2XL, 3XL • Red (30), Green (70), Black (90)
\$54.99



RED (30)



GREEN (70)



BLACK (90)

LADIES' MOTION PFD

900347 • XS, S, M, L, XL • Red (30), Green (70), Black (90)
\$54.99

SANDSEA SPRINGSUIT

2 mm neoprene. Underarm and lumbar stretch panels for more flexibility. Smoothskin collar with adjustable Velcro for better comfort. Smoothskin seals on sleeves and legs. Zip stash pocket.



MEN'S SANDSEA SPRINGSUIT
900214 • S, M, L, XL • Orange (12), Red (30), Green (70), Black (90)
\$59.99



LADIES' SANDSEA SPRINGSUIT
900215 • 6, 8, 10, 12, 14 • Red (30), Green (70), Black (90)
\$59.99





ORANGE (12)



RED (30)



GREEN (70)

JR. FREEWAVE PFD

Ultra-durable neoprene outer shell. Combination of PVC and polyethylene foam inserts. 2 woven straps with quick release buckles. Armholes cut large for comfort. Heavy-duty front zipper. D-ring for floating lanyard.

900350 • One size • Orange (12), Red (30), Green (70)
\$64.99



ORANGE (12)



RED (30)



GREEN (70)

YOUTH SANDSEA SPRINGSUIT

900219 • 8, 10, 12, 14 • Orange (12), Red (30), Green (70)
\$42.99



ORANGE (12)



RED (30)



GREEN (70)

YOUTH RASHGUARD

Rashguard with SPF 50 UV protection. Mock turtleneck collar design. 6 oz. (170 g) Nylon / Spandex.

900231 • 6, 8, 10, 12, 14 • Orange (12), Red (30), Green (70)
\$22.99



YELLOW (10)



RED (30)

KIDS' SANDSEA PFD

Super-duty nylon outer shell. Polyethylene foam inserts. 3 woven straps with quick release buckles. Armholes cut large for comfort. D-ring for floating lanyard (on L size only).

900321 • 0-14 kg (S), 14-23 kg (M), 23-41 kg (L)
• Yellow (10), Red (30)
\$32.99

Ideal for boat applications



RED (30)

UNIVERSAL BASIC PFD

Super-duty nylon outer shell. 3 quick release buckles. D-ring for floating lanyard.

900325 • One size • Red (30)
\$32.99





Choose the PFD
that is right for
your riding style

FORCE**MUSCLECRAFT**

Offers more warmth, a better fit, more comfort and greater ease of movement. For riders looking for a more technical and fitted PFD.

FREEWAVE**SPORT**

A more fitted and technical PFD. Offers greater ease of movement, better comfort and more warmth.

AIRFLOW**LUXURY PERFORMANCE**

Ecoprene: the advantage of neoprene with optimum protection. 30% lighter than standard neoprene PFDs. Dries faster, takes on less water and stays much cooler than neoprene.

MOTION**RECREATIONAL**

Lightweight, excellent wear & flex fatigue resistance, low water absorption. Affordable, dependable all purpose PFD.

UNIVERSAL BASIC

Super-duty nylon outer shell. Affordable, dependable all purpose PFD. Ideal for boat application.

Jr. FREEWAVE

Offers greater ease of movement, better comfort and more warmth.

KIDS' SANDSEA

Lightweight, low water absorption. Affordable, dependable all purpose PFD.

Colors available	Yellow (10), Orange (12)	Men: Orange (12), Red (30), Black (90) Ladies: Red (30), Green (70), Black (90)	Men: Black (90) Ladies: Black (90)	Men: Red (30), Green (70), Black (90) Ladies: Red (30), Green (70), Black (90)	Red (30)	Orange (12), Red (30), Green (70)	Yellow (10), Red (30)
Lightweight	●○○	●○○	●●○	●●●	●●●	●○○	●●●
Quick-dry	●○○	●○○	●●○	●●●	●●●	●○○	●●●
Outer shell	Ultra-durable neoprene	Ultra-durable neoprene	Ecoprene	Super-duty nylon	Super-duty nylon	Ultra-durable neoprene	Super-duty nylon
UV tested fabric	Yes	Yes	Yes	Yes	Yes	Yes	Yes
Insert / Interior	Soft PVC foam (supple, comfortable, higher buoyancy)	Soft, beveled PVC foam (supple, comfortable, higher buoyancy)	Eco-friendly 100% PCV-free Biofoam (lighter, more supple, more durable)	Combination of PVC and polyethylene foam (light, supple, comfortable, higher buoyancy)	N/A	Soft, beveled PVC foam (supple, comfortable, higher buoyancy)	Combination of PVC and polyethylene foam (light, supple, comfortable, higher buoyancy)
Mesh drain panels (Evacuate water to lighten the PFD when wet)	Yes	Yes	Yes	No	No	Yes	No
Armholes cut large (Better comfort / ease of movement)	No	Yes	Yes	Yes	No	Yes	Yes
Woven straps (Better comfort and adjustments. Helps fit different morphology)	2	2	2	4	3	2	0 – 14 kg: 2 14 – 23 kg: 3 23 – 41 kg: 3
Quick release buckle	Yes	Yes	Yes	Yes	Yes	Yes	Yes
Heavy-duty zipper	Yes	Yes	Yes	N/A	N/A	Yes	N/A
D-ring for lanyard	Yes	Yes	Yes	Yes	Yes	N/A	N/A
Special features	<ul style="list-style-type: none"> Anatomically cut Loop at the back neck to prevent loss of Sea-Doo goggles in water 	<ul style="list-style-type: none"> Split tail comfort design 	<ul style="list-style-type: none"> Dries faster, takes on less water and stays much cooler than neoprene Loop at the back neck to prevent loss of Sea-Doo goggles in water 	<ul style="list-style-type: none"> Seat contour system for increased comfort while seated 			<ul style="list-style-type: none"> Canadian Kids' vests come standard with Coast Guard approved pillow

TECHNICAL GEAR



Goggle-to-pfd attachment cord



SEA-DOO AMPHIBIOUS RIDING GOGGLES

Made from super strong and lightweight material. Soft and flexible frame conforms to the shape of any face. Float completely above water. Aerodynamic design with 100% UV protection. Interchangeable polarized lenses. Suspended lens design for best anti-fog performance. Goggle-to-PFD attachment cord to avoid losing your goggles in water (loop on 2012 & 2013 Force and Airflow PFDs). Sea-Doo branded storage hard case, with pouch that also doubles as cleaning cloth. Adjustable Sea-Doo branded strap.

447723 • One size • Black with graphics (94)
\$79.99



AMPHIBIOUS GOGGLE POLARIZED REPLACEMENT LENS

447791 • One size • Grey (09), Amber (95)
\$21.99



AMPHIBIOUS GOGGLE CLEAR REPLACEMENT LENS

447792 • One size • Clear (00)
\$21.99



WHITE (01)



YELLOW (10)



ORANGE (12)



BLACK (90)

SEA-DOO RIDING GOGGLES

Specially designed for watercraft applications to deliver the best eye protection ever. Revolutionary patented hypoallergenic silicone seal offering the finest anti-fog solution. Anti-fog and scratch-resistant mirrored lenses for accurate visibility on water. Goggle-to-PFD attachment cord to avoid losing your goggle in water (loop on 2012 & 2013 Force and Airflow PFDs). Sea-Doo branded storage hard case, with pouch that also doubles as cleaning cloth. Adjustable Sea-Doo branded strap.

447462 • One size • White (01), Yellow (10), Orange (12), Black (90)
\$79.99



CLARINO NASH

is one of the most commonly used glove materials because of its durability, resistance, comfort and awesome grip

VEHICLE GLOVES

Neoprene gloves with Spandex finger gussets. Clarino[®] Nash palm. Rubberized Pro-Grip at thumb and palm for superior grip. Double-stitching at high stress areas. Adjustable Velcro wrist closure. Rubber injection logo at index finger. Debossed logo detail at backhand. 50% Neoprene, 40% Clarino Nash, 5% Lycra.

FULL-FINGER VEHICLE GLOVES

286307 • XS, S, M, L, XL, 2XL, 3XL
• Charcoal Grey (07)
\$39.99

SHORTY VEHICLE GLOVES

Finger loops at middle and 4th fingers for easy glove removal.
286306 • XS, S, M, L, XL, 2XL, 3XL • Grey (09)
\$32.99



Cooler side pocket



Waterproof compartment



Mesh inner pocket



SEA-DOO DUFFLE BAG

Specially designed for day trips or extended outings. Made of durable polyester. Segmented mesh inner pocket with key hook. Carry strap with shoulder protector. Sizes: 60 cm x 30 cm x 30 cm (24" x 12" x 12").

447731 • One size • Charcoal Grey (07)

\$64.99



SEA-DOO BOOTIES

Easy one-hand lace system with side hooks. 4 mm interior neoprene sock. Injection-molded toe and heel cap. Anatomic and pre-shaped design. Heel cup support. Mesh panels and perforated sole for water evacuation. Interior foam cushion at ankle. Rubber logo patch. Sea-Doo branded. 50% Synthetic Leather, 35% Neoprene, 15% Nylon.

285702 • 6, 7, 8, 9, 10, 11, 12, 13 (Men's sizing) • Black (90)

\$94.99



Removable neoprene ankle protector

SEA-DOO WATER SHOES

Attractive and trendy look. Lightweight design made of EVA with TPU support. Easy one-hand side lace system. Mesh fabric for best adjustability. Rubber insert outsole for anti-slip performance. Perforated sole for water evacuation. Toe cap protection. Sea-Doo branded.

444184 • 7, 8, 9, 10, 11, 12 (Men's sizing) • Black (90)

\$79.99

SPORTSWEAR



Functional,
fun, fashionable.
Made for navigating
through life in style,
both on the water
and around town.





SEA-DOO TEE

Trendy tribal Sea-Doo graphic. 100% Cotton.

286245 • S, M, L, XL, 2XL, 3XL • White (01), Charcoal Grey (07), Red (30)
\$32.99



SEA-DOO POLO

Comfortable piqué fabric. 3-button opening. Decorative print and embroidery. 65% Polyester, 35% Cotton Piqué.

286309 • S, M, L, XL, 2XL, 3XL • Grey (09)
\$39.99



Our technical boardshorts fabric scientifically contours the body for functionality in water and looks comfortably cool everywhere else

SEA-DOO TECHNICAL BOARDSHORTS

4-way stretch, ultra light and quick-dry fabric. Lightweight stretch neoprene removable lining. Functional in water, fashionable out of the water. Reinforced crotch seams. One front pocket on right side. Tie waist closure. Non-fading sublimated print at back. 88% Polyester, 12% Spandex.

286310 • 28, 30, 32, 34, 36, 38, 40, 42 • Black (90)
\$79.99



CLASSIC TEE

Featuring Sea-Doo printed logo. 100% Cotton.

286313 • S, M, L, XL, 2XL, 3XL • White (01), Green (70), Black (90)

\$19.99



iCONTROL™ SEA-DOO TEE

Featuring iControl Sea-Doo printed logo. 100% Cotton.

286315 • S, M, L, XL, 2XL, 3XL • White (01), Blue (80)

\$32.99



SEA-DOO SPLASH CAP

Print at front left side. Sea-Doo rubber label at left side. Metal adjuster with BRP logo. 100% Cotton.

286317 • One size • Mixed Color (18)

\$19.99

X-TEAM CAP

Lightweight and breathable cap with mesh venting. X-Team embroidery. Metal adjuster with BRP logo. 100% Polyester.

286318 • One size • White (01), Blue (80)

\$19.99



SEA-DOO TECHNICAL BOARDSHORTS

4-way stretch, ultra light and quick-dry fabric. Lightweight stretch neoprene removable lining. Functional in water, fashionable out of the water. Reinforced crotch seams. One front pocket on right side. Tie waist closure. Non-fading sublimated print at back. 88% Polyester, 12% Spandex.

286301 • 28, 30, 32, 34, 36, 38, 40, 42 • Mixed Color (18)

\$84.99





SEA-DOO SIGNATURE TEE

V-shaped neckline. Stretchable fabric. Sleeve ties to adjust sleeve length.
97% Cotton, 3% Spandex.

286316 • XS, S, M, L, XL, 2XL • White (01), Pink (36)
\$32.99



TECHNICAL RIDING BOARDSHORTS

4-way stretch, ultra light and quick-dry fabric. Removable lightweight 4-way stretch neoprene shorts for enhanced comfort while riding. Snap waist closure. Reinforced crotch seams. One front pocket on right side. Sea-Doo decorative embroidery at back. Printed Sea-Doo logo. 88% Polyester, 12% Spandex.
286311 • 26, 28, 30, 32, 34, 36, 38 • Charcoal Grey (07)
\$64.99

SEA-DOO CAP

Stretchable, thanks to back elastic. Sea-Doo label on right side and "S" logo decorative snap on left side. 100% Cotton.
286220 • S/M, L/XL • White (01), Blue (80)
\$19.99

SIZING CHART



These charts show body measurements. Be sure to measure yourself to find the accurate size.

HOW TO MEASURE

For best results, have someone else take measurements. Measure body in swimsuit or underwear. Tape must be snug but not tight. If measurements fall between two sizes, order the larger size.

HEIGHT

Stand with back straight, without shoes; measure from the top of the head to the floor.

CHEST

Measure under your arms, around the fullest part of your chest.

WAIST

Measure around your natural waistline, keeping one finger between the tape and body.

HIPS

Stand with legs together, measure around the fullest part of hips, ensuring the tape is level.

PFDs

Force

SIZE	XS/S	M	L	XL	2XL/3XL
Chest (cm)	86-91	94-99	99-104	104-109	112-119

Men's Freewave / Motion

SIZE	S	M	L	XL	2XL	3XL
Chest (cm)	84-94	94-104	104-114	114-124	124-135	135-145

Ladies' Freewave / Airflow

SIZE	S	M	L	XL	2XL
Chest (cm)	76-84	84-91	91-99	99-107	107-114

Men's Airflow

SIZE	S	M	L	XL	2XL
Chest (cm)	84-94	94-102	104-114	114-124	124-135

Ladies' Motion

SIZE	XS	S	M	L	XL
Chest (cm)	76-84	84-91	91-104	104-114	114-124

Jr. Freewave

SIZE	OS
Chest (cm)	63, 5-74

Kids' Sandsea

SIZE	S	M	L
Weight (kg)	0-14	14-23	23-41

Universal Basic

SIZE	OS
Chest (cm)	76-132

WETSUITS

Men

SIZE	S	M	L	XL	2XL
Height (m)	1.68-1.73	1.73-1.80	1.80-1.88	1.83-1.90	1.83-1.93
Weight (kg)	59-68	68-79	79-91	88-100	98-107

Ladies

SIZE	6	8	10	12	14
Height (m)	1.57-1.63	1.63-1.70	1.68-1.75	1.70-1.78	1.73-1.78
Weight (kg)	50-52	54-59	59-64	64-68	68-73

Kids

SIZE	8	10	12	14
Height (m)	1.37-1.42	1.42-1.47	1.47-1.52	1.52-1.60
Weight (kg)	27	32	36	41

GLOVES (MEASURE PALM WIDTH)

SIZE	XS	S	M	L	XL	2XL	3XL
CM	8	9	9,5	10	11	11,5	12,5

What code represents your size?

- Find your size
- The corresponding code is THE CODE you use to complete the part number on your order. Example: 440227_90 Size: M = code "06", therefore 4402270690

Order Chart

SIZE CODE	ONE SIZE 00	XS 02	S 04	M 06	L 09	XL 12	2XL 14	3XL 16	XS/S 90	S/M 72	L/XL 73	2XL/3XL 74							
SIZE CODE	6 25	7 27	8 28	9 29	10 30	11 31	12 32	14 34	26 89	28 36	30 37	32 38	34 39	36 40	38 41	40 42	0-30 60	30-50 62	50-90 64

SPORTSWEAR

Men's Tops

SIZE	S	M	L	XL	2XL	3XL
Chest (cm)	91-97	99-104	107-112	117-122	127-132	137-142
Waist (cm)	76-79	84-89	91-97	104-109	114-122	127-132
Arm length (cm)	84	84	86	86	89	89

Men's Technical Boardshorts

SIZE	28	30	32	34	36	38	40	42
Waist (cm)	71-76	76-81	81-86	86-91	91-97	97-102	104-107	107-112
Hips (cm)	84-89	89-94	94-99	99-104	104-109	109-114	114-119	119-124

Ladies' Tops

SIZE	XS	S	M	L	XL	2XL	3XL
Chest (cm)	83-85	88-90	93-97	100-104	109-116	119-126	130-135
Waist (cm)	62-65	67-70	72-76	80-84	89-94	99-104	109-114
Arm length (cm)	74	76	79	81	81	81	81

Ladies' Technical Riding Boardshorts

SIZE	26	28	30	32	34	36	38
Waist (cm)	60-66	66-71	71-76	76-81	81-86	86-91	91-97
Hips (cm)	86-91	91-97	97-102	102-107	107-112	112-117	117-122

MORE FUN ON THE WATER





SEA-DOO GRAPHIC DECK TUBE 2 TOWABLE

1-2 rider tube. 157 cm x 160 cm (62" x 63"). Flat-deck design for an incredible fun ride. Ride lying down head first. Construction boasts a heavy gauge PVC bladder and 420D rugged nylon cover with self-bailing drain vent. Front 4-point reinforced tow hook connection and double-webbing soft foam handles with neoprene knuckle guards to prevent chafing. Additional features include a padded valve cover. Includes a puncture repair kit. For 14 years old and up.

2520400000
\$170.49



SEA-DOO GX4 TOWABLE TUBE

4 rider sit-in tube. 233 cm x 213 cm (92" x 84"). Multiple sit-in and chariot riding positions. Construction boasts a heavy-gauge PVC bladder and 840D rugged nylon cover with self-bailing drain vent. 3-point reinforced tow hook connection point. Additional features include neoprene knuckle-protection pads and soft neoprene seating area. 14 years old and up.

8001130030
\$439.99



SEA-DOO AQUABLAST TOWABLE

1 rider PWC-style tube. 175 cm x 102 cm (69" x 40"). Ride kneeling down or lie down head first for a thrilling close-to-water-surface ride. Heavy gauge PVC construction, welded front tow hook connection and double-webbing soft foam handles with neoprene knuckle guards to prevent chafing. Additional features include neoprene pads in chest and knee areas for comfort. Includes a puncture repair kit. For 14 years old and up.

1301200012
\$141.89



SEA-DOO RECHARGEABLE INFLATOR

110 V AC electric air pump. Maximum output 1.1 psi. High volume air flow for fast inflation/deflation. 3 interchangeable adapters for different applications and hinged handle for portability.

5030020010
\$38.49





SEASCOOTER RS1

Dive propulsion vehicle. The fastest and most lightweight recreational seascooter in its category. Speed up to 4.35 mph (7 km/h). Depth rated to 130' (40 m). Runs up to 90 minutes. Energy efficient Lithium-ion powered. Automatic neutral-buoyancy adjustment system. Revolutionary plug-in charging system. For professional divers and snorkelers. Weight 10 kg (21 lb). Rechargeable 22.2 V / 12 Ah Lithium-ion battery, 4 ballasts and 2 glide fins included.

8001050090
\$1,538.90

SEASCOOTER RS3

Dive propulsion vehicle. Among the fastest and most lightweight recreational seascooters. Speed up to 3.10 mph (5 km/h). Depth rated to 98' (30 m). Runs up to 60 minutes. Energy efficient Lithium-ion powered. Automatic neutral-buoyancy adjustment system. Revolutionary plug-in charging system. For professional divers and snorkelers. Weight 9 kg (19 lb). Rechargeable 22.2 V / 4 Ah Lithium-ion battery included.

8001070010
\$878.90



SNORKELING KIT

Easy adjustment mask with silicone skirt and strap. Submersible snorkel with silicone mouthpiece and purge. Open heel with adjustable strap travel fins. Includes a premium travel bag with mesh panels for drainage and ventilation.

MEN'S

8001147209 • S / M (4 - 8½)
8001147309 • L / XL (9 - 13)
\$71.49

LADIES'

8001157236 • S / M (5 - 9½)
8001157336 • L / XL (9½ -)
\$71.49

YOUTH

8001160471 • Small (Boys 1 - 3, Girls 2 - 4)
8001160971 • Large (Boys 3 - 6, Girls 4 - 7)
\$49.49



CAN KOOZIE WITH CARABINER

Collapsible can cooler with carabiner. No tear binding.

SE12A10080

\$4.50



SEDICI TUMBLER

Double-wall acrylic tumbler. Acrylic straw with stopper. BPA Free. Product ships with matching color straw. 473 ml (16 oz).

SE12A801900

\$11.99



WATER BOTTLE 18 OZ

This BPA free water bottle is made from a durable polyethylene terephthalate (PETG) material. The tapered body is high impact resistant and has a self-attached, leak resistant tethered screw top.

SE12A20100

\$8.99



CURVED STAINLESS STEEL TRAVEL MUG

Push-on lid with twist and lock opening. Double-wall stainless steel construction with plastic outer band. Includes 1-piece gift box. 473 ml (16 oz).

SE12A701900

\$22.99



BISTRO MUG

16 oz (473 ml).

SE12A20400

\$11.99



HIGH SIERRA 61 CM (24") WHEELED CARRY-ON WITH REMOVABLE DAYPACK

Three bags in one: wheeled bag, backpack or day pack. Large main compartment with "book" style opening and interior clothing straps. Removable front day pack with zippered accessory pocket, dual side water bottle pockets and CD/MP3 player pocket with headphone port. Back strap slips over the extended handle of main bag. Meets FAA carry-on regulations.

SE12A101900

\$239.99



LAPTOP BACKPACK

Two main compartments. Yoke style shoulder straps. Fits most 17" (46 cm) laptops. Built-in audio pocket with headphone pass-through. 60 cm x 36 cm x 18 cm (24" H x 14" W x 7" D).

SE09A10090

\$119.99



BACKPACK COOLER

Cool down with this awesome 16-can backpack cooler! Fully equipped with a watertight insulated compartment. Mesh water bottle pocket. Elastic cord storage. Front zip pocket. D-ring. Adjustable shoulder straps. Cell phone pocket.

SE12A10070

\$45.99



SEA-DOO WATERPROOF MP3/CELL POUCH

Keep valuables dry at the beach or pool. 100% waterproof. Adjustable lanyard.

SE10A10020
\$12.99



LED FLASHLIGHT

This aluminum LED flashlight with strap includes 3 AAA batteries and 9 white LED lights.

SE12A40400
\$9.99



COLOR LIGHT KEYCHAIN

Slide button turns on and off. Battery included.

SE12A40300
\$2.50



FLOATING KEYCHAIN

Neoprene floating keychain. Floats up to 3 keys.

SE8A100080
\$4.99



MADISON CINCH BAG

Open main compartment with cinch top. Drawstring design for shoulder or backpack carry. Front mesh air pockets for ventilation.

SE12A401900
\$10.99



18-PIECE STEEL BBQ SET

18-piece BBQ set in metal edged handled case. Includes basting brush, fork, large knife, scraper/brush, tongs, multi-purpose spatula, 4 steak knives, 8 corn holders.

SE12A40500
\$79.99



FOOTBALL BALL

Football great for tossing around on the beach.

SE12A10060
\$19.99



SEA-DOO FLOATING EYEWEAR RETAINER

Quick dry neoprene floating strap. Holds tight. Perfect for riding on water.

SE08A55580
\$3.50



For additional information or to purchase these items, drop by your authorized Sea-Doo dealer or visit shop-brp.com.

WATERCRAFT ACCESSORIES



Enhance your PWC
with more versatility,
more agility, more drive,
more personality.
Need we say more?





SEA-DOO SPEED TIE

The first and only fully-integrated PWC mooring system. Convenient snap-out plates on the RXT iS 2012 allow for easy installation and positioning of the Sea-Doo Speed Tie system at the front and rear of the vehicle. Provides quick and secure docking. Stores 8' (2.4 m) of rope and locks to desired length. Sea-Doo Speed Tie system is standard equipment only on the GTX LTD 2012. Sold in pairs.

295100466 • RXP-X 2012 and up

295100422 • GTR 2012 and up, GTI, GTI SE and GTS 2011 and up, GTX 2010 and up without suspension, WAKE Pro, RXT & RXT-X 2010 and up without suspension (Not illustrated)

296000249 • GTX iS & RXT iS 2009 and up, RXT-X aS 2011 and up, GTX-S 155 2012 and up with suspension (Not illustrated)

\$184.99

SEA-DOO SPEED TIE FOR DOCK

Same exclusive mooring system available as an accessory on the RXT iS 2012 and as standard equipment on the GTX LTD 2012, adapted for dock mounting. Bolts directly to dock. Provides quick and secure mooring for all PWCs, eliminating excessive rope on the dock. Stores 8' (2.4 m) of rope and locks to desired length. Sold individually.

295100336

\$114.99



Complete and versatile lineup of watercraft covers. Solution-dyed fabric offers easy manipulation and increased UV resistance. Strapless design provides easy installation. Patented air release vent system for trailering.





280000460*, 280000472*, 280000587*



280000461*



280000464*



280000462*



280000369*



280000278*



280000596, 280000543



280000597



280000598

*Convenient openings for easy access to the Speed Tie mooring system.
Note: For prior model years, please ask your dealer for details.

COVERS

Fits	Colors	SKU	Price
RXT iS 260 (2009 and up), GTX iS 215 (2010 and up), GTX LTD iS 260 (2009 and up)	Black / Light Grey	280000460*	\$259.99
GTX 155/215, RXT-X 260, RXT-X 260 Int'l & RXT 260 (2010 and up), Models without suspension	Black / Light Grey	280000472*	\$259.99
GTX-S 155 (2012 and up), RXT-X aS (2011 and up)	Black / Light Grey	280000587*	\$259.99
WAKE Pro (2010 and up), WAKE Pro 215 (2010 and up)	Black / Viper Red	280000461*	\$259.99
RXP & RXP-X (2004 - 2011)	Black / Mortar Grey	280000464*	\$259.99
GTI & GTI SE (2006 - 2010), WAKE 155 (2009 - 2010)	Black / Light Grey	280000462*	\$259.99
WAKE 215 (2007 - 2009)	Mortar Grey / Black	280000369*	\$244.99
GTX, except LTD iS package (2007 - 2009)	Mortar Grey / Black	280000278*	\$224.99
GTR 215 (2012 and up)	Black / Light Grey	280000596	\$259.99
RXP-X 260 (2012 and up)	Black / Light Grey	280000543	\$259.99
WAKE 155 (2011 and up)	Black / Viper Red	280000597	\$259.99
GTI 130 (2011 and up), GTI SE 130 / 155 (2011 and up), GTS Rental (2011 and up), GTS (2011 and up)	Black / Light Grey	280000598	\$259.99
PWC COVER HOOK REPLACEMENT KIT			
Replacement sew-in attachment hooks. Hook under PWC bumper. Set of 2.			
All PWC covers		295100407	\$4.99



WAKEBOARD RACK

Specially designed to fit all Sea-Doo PWCs. Each rack holds one wakeboard and offers safe and easy board storage. Sold individually.

295100453 • GTX with iS, RXT, RXT-X & WAKE Pro 2010, GTI & GTS (2011 and prior), GTR 2012

295501037 • GTI 2006 - 2010
\$189.99



RETRACTABLE SKI PYLON

Bestselling, waterfun retractable high-rise ski pylon with built-in spotter grab rails.

295100304 • GTI 2006 - 2010 (Not illustrated)
\$344.99

295100457 • RXT-X, GTX, RXT, except models with iS, GTI & GTS (2011 and prior), GTR (2012 and prior)
\$394.99



SHOCK TUBE

Protects passengers from ski rope kick-back and keeps ski ropes away from impellers. Durable nylon cover over closed-cell foam.

295100209 • Yellow

295100210 • Blue

\$30.99

295500597 • Red

295100287 • Sand



SKI EYE

Add to your existing U-ring to tow waterskiers more easily. Also ideal for tube towing.

291002351 • GTX, GTS, GTI, RXT, GTR & RXP-X 2012

\$29.99





FRONT STORAGE TRAY

Optimizes storage on PWC. Cargo handle included. 12 L capacity.

295100583 • RXP-X 2012 and up, GTI & GTS 2011 and up, GTR 2012 and up • Grey

\$169.99



GLOVE BOX ORGANIZER

Kit includes glove box liner and semi-rigid splash-resistant, portable case. The liner cushions the inside of the glove box to provide insulation. The case fits perfectly in the glove box and is easily accessible when opening the glove box cover. This semi-rigid case is perfect for carrying and storing valuables, e.g. keys, cell phone, wallet, sunglasses.

295100327 • Models on S³Hull™, all iS models

\$144.99



STORAGE TRAY

Complete with molded compartments for convenient storage of your watercraft safety kit, cooler and watertight foam insulated otter box. Also great for wallets, glasses and cell phones. Netting provides secure storage for towels, clothing and sandals. Comes with a practical integrated carry handle.

269501478 • GTX & RXT 2009 and prior, except models with iS

\$74.99



GLOVE COMPARTMENT & GARMIN® 76 GPS HOLDER

This glove compartment with a recessed space in the door is specially designed to house a Garmin 76 GPS unit. Just clip it in for safe storage and handy retrieval.

295100283 • GTX & RXT 2009 and prior, except GTX LTD models with package iS • Black

\$58.99



DRY BAG

10 L (2.6 US gallons) watertight bag. Improved watertightness. Puncture-resistant PVC coated polyester fiber material. Reinforced bottom.

269501744 • All models except 3D • Black

\$34.99



DEPTH FINDER

Measures and displays the water depth below the hull.

295100421 • 2011 and up models with iBR™*, 2011 GTS
\$354.99

295100324 • All GTX & RXT models with 4-TEC engines 2009 and prior (except 2002), models with iS, GTI 2008-2010

295100332 • 2010 and prior iS models, 2010 GTX, RXT, RXT-X and WAKE Pro
\$404.99

*Intelligent Brake and Reverse (iBR)



CRUISE CONTROL AND SKI MODE

Activates ski mode, cruise control and slow speed mode through a simple switch mounted on the handlebar. User-friendly interface on gauge. Plugs in diagnostics connector. Includes switch, cap and hardware necessary for installation.

295100383 • 2010 models with iBR

295100455 • 2011 and up models with iBR
\$234.99



THROW LINE BAG

Floating storage bag and 15 m (50 ft) of buoyant yellow rope. Throw line bags provide added safety.

295500832
\$32.99

WHISTLE

This "pea-less" whistle produces an extremely loud, high, penetrating trill that can be heard over long distances. Unaffected by water, just clear with one quick blow.

295500554 • Yellow
\$9.99



MOORING LINE

Solid UV-protected, highly visible polypropylene buoyant rope.

295100060 • 4.6 m • Yellow

295100240 • 4.6 m • White

295100239 • 4.6 m • Black

295100236 • 4.6 m • Blue

295100235 • 4.6 m • Red

\$34.99

269501288 • 4.6 m • Twilight Blue

\$38.99

295100233 • 6 m • White

295100231 • 6 m • Blue

\$36.99

295100234 • 7.6 m • Blue

295100232 • 7.6 m • White

\$44.99

295100008 • 3.7 m • Purple

\$28.49



TUBE TOW ROPE

15.2 m (50') tow rope.

295100207 • All Boats and 3-seater PWCs • White
\$49.99



DOCK TIE

Moor your boat with these 1.2 m (4') floating Sea-Doo bungee-type ties. One per package.

295100047 • Yellow
\$34.99



FENDER

Inflatable, molded, marine-strength 7.6 cm x 33 cm (3" x 13") vinyl fender. One per package. Recommended for all PWCs 2001 and prior for best fit.

295100109 • White

295100110 • Yellow

295100111 • Bright Red

\$33.99



VARIABLE TRIM SYSTEM MODULE

Activates and provides instantaneous VTS adjustment. Simple switch mounted on handlebar allows fine tuning of watercraft trim angle while riding. Plugs in diagnostics connector. Includes switch, cap and hardware necessary for installation. This accessory cannot be installed on 2012 and up models.

295100379 • 2010 models with iBR

295100433 • 2011 models with iBR without VTS switch

\$189.99

SPEED AND WATER TEMPERATURE SENSOR

(Not illustrated)

Integrated boat speed and water temperature sensor. Ready to plug into vehicle wiring harness. Installation hardware included.

295100309 • GTI 2006-2010

\$99.99



FENDER

Polyform strength and dependability with a vinyl valve system for quick, flexible adjustment of firmness. One fender and one rope per package. Fender ties included.

295100372 • White

\$29.99

LEARNING KEY LANYARD

Control the speed of your boat. A must for less experienced riders.

278002203 • DI & 4-TEC models

\$83.99



DESS FLOATING SAFETY LANYARD

Control the speed of your boat. A must for less experienced riders.

278002199 • All models

\$65.99



SKI MODULE

Activates ski mode. Choice of different preset acceleration curves for perfect launch every time when towing a skier or wakeboarder. User-friendly interface on gauge. Plugs into diagnostics connector. Includes hardware necessary for installation.

295100380 • 2010 models with iBR

295100432 • 2011 and up models with iBR.

Standard feature on WAKE models.

\$149.99



SANDBAG ANCHOR

600-denier polyester bag with up to 16 kg (35 lbs) sand/rock capacity. 6.4 m (21') polypropylene cord. Stores easily and floats when empty. Measures 31.8 cm x 22.9 cm (12 1/2" x 9")

295100211 • Yellow **295100286 • Sand**

295100212 • Blue **295500589 • Red**

\$49.99



X PACKAGE MODULE

Activates X Package functions on gauge: lap timer, fuel autonomy (time and distance to "empty"), average and top speed and RPM display, and engine temperature. User-friendly interface on gauge. Plugs in diagnostics connector. Includes hardware necessary for installation.

295100381 • 2010 models with iBR

295100431 • 2011 models and up with iBR.

Standard feature on X models.

\$149.99



ANCHOR

Watercraft anchor, 5 kg (11 lbs).

295100046

\$64.99

ANCHOR PACKAGE

Package combining anchor with anchor bag, 5 kg (11 lbs).

295100343

\$99.99



LADDER
Retractable boarding step designed specifically for your watercraft. Spring-loaded to stay in the UP position.
295100552 • All models 2006 and up
\$264.99



PERFORMANCE INTAKE GRATE
Improves handling and stability at high speeds. Anodized aluminum construction. Replaces stock intake grate.
295100435 • RXP-X up to 2011
\$174.99



MIRRORS KIT
Set of 2 mirrors with installation hardware.
295100308 • GTI 2006 - 2010 • Black
\$114.99



SAFETY EQUIPMENT KIT
This kit includes all the essentials for your watercraft. 15 m (50 ft) of buoyant heaving line, bailer, whistle and watertight flashlight.
295100330
\$24.99



FIRE EXTINGUISHER
A requirement for any boat. Ideal for grease, oil and electrical fires. US Coast Guard approved.
Note: White color not available in Canada.
295100005 • Red
\$22.99



HANDLEGRIPS KIT
Dual density rubber. Better comfort and control. Six bright colors. Fits all 2000 and up watercraft. Sold in pairs.
295500976 • Blue / Black
295500977 • Earth Grey / Black
295500978 • Green / Black
\$21.99



295500979 • Red / Black
295500980 • Pewter Grey / Black
295500981 • Yellow / Black
\$21.99



277001336 • Slate Grey
• Sold individually
\$13.99/each



DELUXE TIE DOWN BUCKLE
Designed specifically for strapping a PWC to a trailer. Custom 4-hook system tie down kit ideal for quick installation/removal without removing strap from ratchet. Fingertip tension adjustment with deluxe ratchet. 1" (2.5 cm) Sea-Doo branded polyester strap. Hull protector pads. Extra strap holder. Coated hooks.
295100389 • All PWCs & Boats
\$23.99



TRAILER REAR TIE DOWN BRACE STRAP
Secure your boat and PWC while trailering. Straps fit all boats up to 18' (5.5 m) in length. One per pack.
295100184
\$22.99



DELUXE TIE DOWN BUCKLE
Heavy-duty strength polyester, fingertip tension adjustment with ratchet buckle release. Embroidered 1" (2.5 cm) nylon strap adjusts from 1' to 5' (30 cm to 1.52 m). One per pack.
295100185 • All PWCs & Boats
\$18.99



DELUXE TIE DOWN BUCKLE
400 lbs (181 kg) safe working load. 1" x 10' (2.5 cm x 3 m) strap with Sea-Doo, Ski-Doo and Can-Am logos. Deluxe ratchet with rubber handle. Coated S hooks. Pack of 2.
860200447 • All PWCs & Boats
\$16.99

**SEA-DOO PARADISE DECAL**

Set of 2.
295100338 • 25 cm x 20 cm (10" x 8")
\$17.99

**SEA-DOO WAVE DECAL**

Set of 2.
295100339 • 25 cm x 20 cm (10" x 8")
\$17.99

**SEA-DOO FLOWER DECAL**

Set of 2.
295100341 • 25 cm x 20 cm (10" x 8")
\$17.99

**SEA-DOO X PACKAGE DECAL**

Set of 2.
295100340 • 25 cm x 20 cm (10" x 8")
\$17.99

**SEA-DOO TROPICAL DECAL**

Set of 2.
295100342 • 25 cm x 20 cm (10" x 8")
\$17.99

**24-UNIT STRIPE DECALS**

Package of 24 decals, 4 of each design. Clear vinyl.
295100347 • 11 cm x 11 cm
(4 1/2" x 4 1/2")
\$129.99

REGISTRATION KIT

Improved, high-quality registration number kit made of UV resistant vinyl for longevity. An excellent match for your new boat or watercraft.

295100570 • Dimensions: 7.6 cm (3") • Black

295100578 • Dimensions: 7.6 cm (3") • Light Grey
\$34.99



RXT 260
MUSCLECRAFT



Wakeboard Rack • p. 34



Retractable Ski Pylon • p. 34



Sea-Doo Speed Tie • p. 31



Sea-Doo Move I with iCatch™ Trailer



GTX, RXT-X & RXT Cover • p. 33



Bilge Pump Kit • p. 52



Glove Box Organizer • p. 35



WAKE PRO 215
SPORT



X Package Module • p. 37



Glove Box Organizer • p. 35



Sea-Doo Speed Tie • p. 31



Sea-Doo Move I with Walk Pad Trailer



WAKE Pro Cover • p. 33



Bilge Pump Kit • p. 52



Safety Equipment Kit • p. 38



GTI LTD
LUXURY
PERFORMANCE



Retractable Ski Pylon • p. 34



Wakeboard Rack • p. 34



Dry Bag • p. 35



Front Storage Tray • p. 35



Bilge Pump Kit • p. 52



Fender • p. 37



Sea-Doo Move I with iCatch and Walk Pad Trailer



GTI SE 130
RECREATION



Retractable Ski Pylon • p. 34



Wakeboard Rack • p. 34



Sea-Doo Speed Tie • p. 31



Sea-Doo Move II with iCatch Trailer



GTI, GTI SE & GTS Cover • p. 33



Front Storage Tray • p. 35



Bilge Pump Kit • p. 52

SEA-DOO

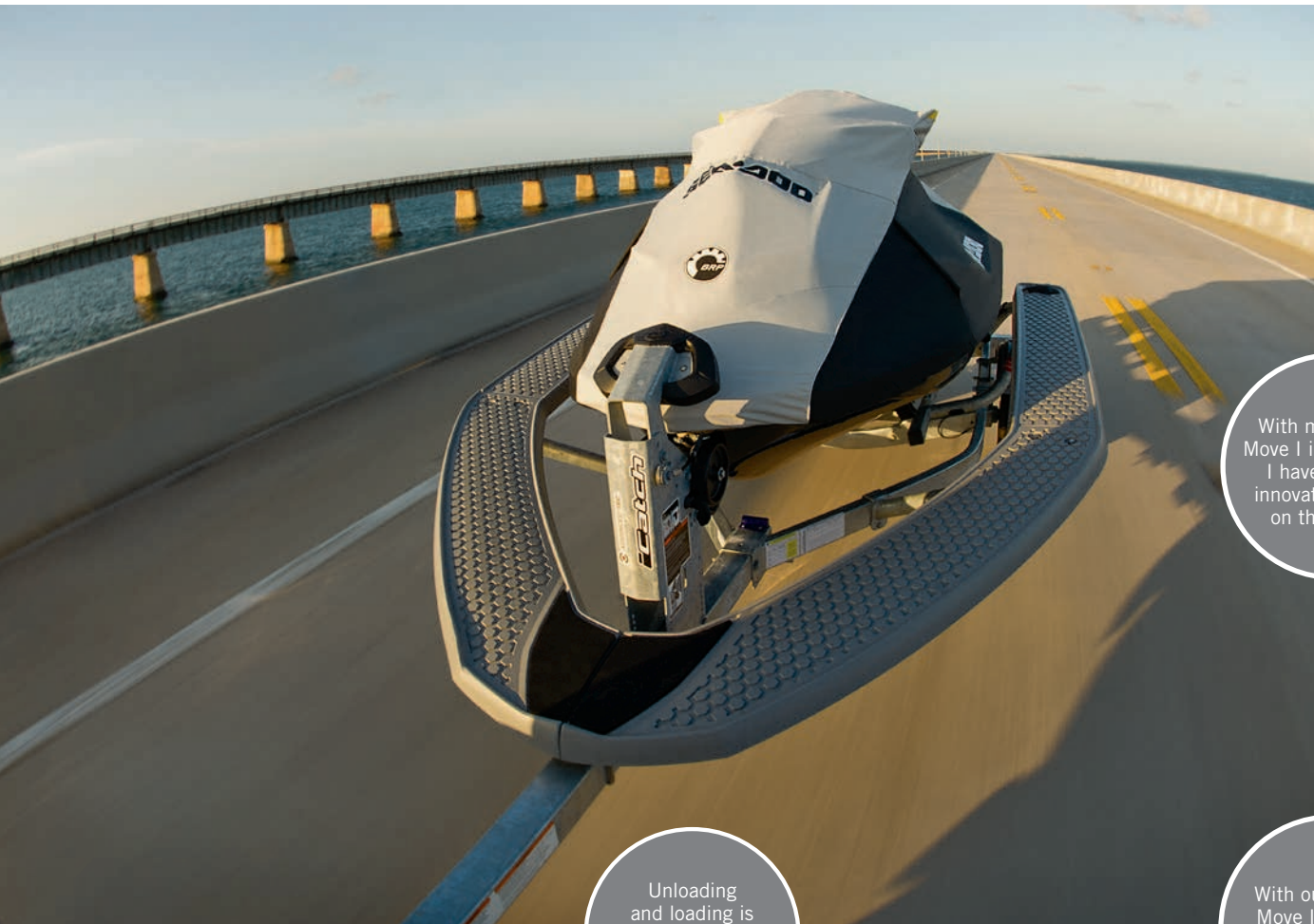
M



VE

TRAILERS

& SEA-DOO WATERCRAFT: MADE FOR EACH OTHER



With my Sea-Doo Move I iCatch trailer, I have the most innovative product on the market.



With our Sea-Doo Move II, we bring the family with peace of mind.



Unloading and loading is so easy with my Sea-Doo Move I trailer.





**CHOOSE THE
SEA-DOO MOVE
THAT SUITS
YOUR NEED.**

- The iCatch™ system allows you to spend less time on the ramp and more time in the water, while the walk pad serves as guidance when the trailer is underwater.
 - Roller bunk system simplifies unloading and loading.
 - Fully adjustable carpeted bunks (side-to-side/ front-to-back) allow you to change bunk angles to fit all watercrafts.
 - Custom frame design requires less water to load and unload watercraft.
 - Sealed maintenance-free wheel bearings for added peace of mind.
 - All models are available in galvanized frame for extended life in all weather conditions or in a black painted version.
 - Adjustable bunk system and catcher adapt to different types of Sea-Doo watercraft, and help properly position watercraft to improve handling while towing.
- (Models shown with optional accessories.)

SEA-DOO MOVE I



SEA-DOO MOVE I EXTENDED

NEW

Now longer to fit our
longest watercraft



SEA-DOO MOVE I WITH iCATCH

iCatch bow cup included



SEA-DOO MOVE II



SEA-DOO MOVE II WITH iCATCH

iCatch bow cup included

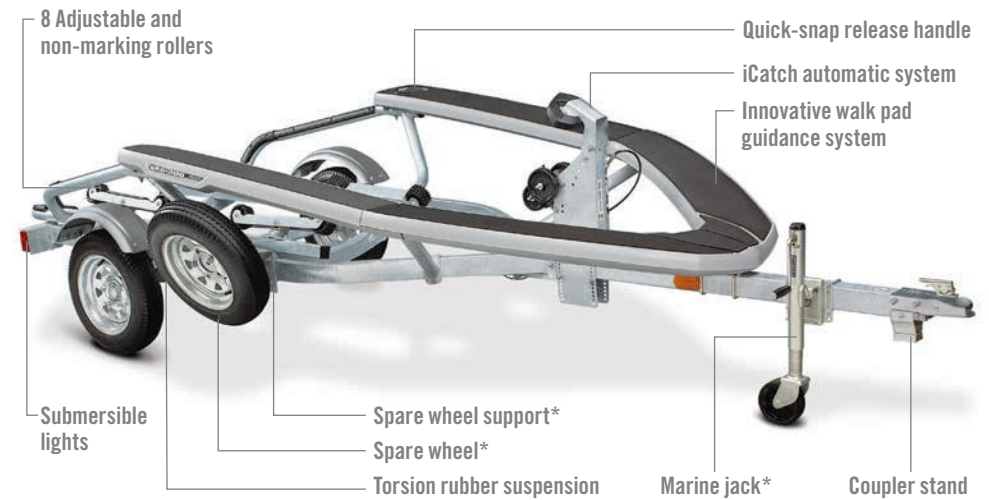


SEA-DOO MOVE I WITH WALK PAD



SEA-DOO MOVE I WITH iCATCH AND WALK PAD

iCatch bow cup included



*Model shown with optional accessories.

Watch how the Sea-Doo Move trailers unique features can let you fully enjoy your journey.

[STORE.SEA-DOO.COM/VIDEO](https://store.sea-doo.com/video)



KEY FEATURES INCLUDED

	SIMPLE					DOUBLE	
	Move I	Move I Extended	Move I with iCatch	Move I with walk pad	Move I with iCatch and walk pad	Move II	Move II with iCatch
Adjustable iCatch system			●		●		●
Rugged and durable hot-dipped galvanized finish (optional)	●	●	●	●	●	●	●
Rugged and durable black powder-coat finish (standard)	●	●	●	●	●	●	●
8 adjustable non-marking rollers (4" left to right, 8-degree angle)			●		●		
16 adjustable non-marking rollers (4" left to right, 8-degree angle)							●
Blow molded walk pad				●	●		
2 adjustable wooden bunks with carpet	●	●		●			
4 adjustable wooden bunks with carpet						●	
Adjustable winch strap(s)	●	●		●		●	
Multi adjustable axle (torsion only)	●	●	●	●	●	●	●
Torsion rubber suspension (for smoother ride) (optional on Sea-Doo Move I)	●		●	●	●		●
Leaf springs suspension (optional on Sea-Doo Move I)	●	●				●	
Tire size: 4.80" x 12"	●	●	●	●	●		
Tire size: ST185/80D13						●	●
Ground wired	●	●	●	●	●	●	●
Fully enclosed wiring harness	●	●	●	●	●	●	●
Submersible lights	●	●	●	●	●	●	●
Coupler stand			●	●	●		●
Suspended plastic fender for better splash protection	●	●	●	●	●		
Suspended "stand on" plastic fender for better splash protection						●	●
Safety cable (for iCatch mechanism)			●		●		●
No-maintenance sealed bearing	●	●	●	●	●	●	●
iCatch bow cup			●		●		●
Marine jack (optional)	●	●	●	●	●	●	●
Walk pad carpet (optional)				●	●		
Watercraft guiding rails			●	●	●		
WARRANTY	1/5 YEARS*					1/5 YEARS*	

*One year complete warranty and 5 years on frame and axle.



WALK PAD CARPET KIT

Complete walk pad carpet kit improves footing and design of Sea-Doo Move I with walk pad watercraft trailer by adding traction mats. Kit includes four 3M self-adhesive carpets for fast, clean installation.
295100398 • Sea-Doo Move I with walk pad Trailers
\$139.99



MARINE JACK

544 kg (1200 lb) heavy-duty swivel mount caster jack. Corrosion resistant zinc plated finish. Provides 30 cm (12") of screw travel and up to 69 cm (27") of lift.
295100399 • Sea Doo Move I & II Trailers
\$89.99



COUPLER STAND

Prevents coupler from hitting the ground and becoming damaged by keeping it raised when the trailer is unhitched to a vehicle. Includes hardware necessary for installation.
295100594
\$23.99



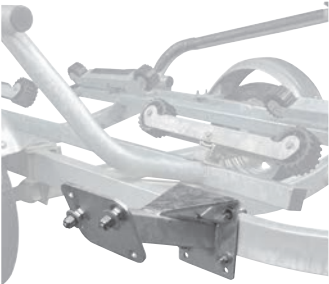
iCATCH BOW CUP

Adaptor cup replacing existing bow eye on all Sea-Doo watercrafts.
295100546 • Sea-Doo Move I & II iCatch Trailers
\$54.99



SPARE WHEEL

30 cm (12") steel spare wheel and tire. (Not illustrated)
295100410 • Sea-Doo Move I Trailers • Painted Silver
295100409 • Sea-Doo Move I Trailers • Galvanized
\$104.99
33 cm (13") steel spare wheel and tire.
295100502 • Sea-Doo Move II Trailers • Galvanized
295100503 • Sea-Doo Move II Trailers • Painted Silver
\$134.99



Move I



Move II

SPARE WHEEL SUPPORT

Includes hardware necessary for installation.
295100500 • Sea-Doo Move I Trailers • Painted Black
295100499 • Sea-Doo Move I Trailers • Galvanized
295100501 • Sea-Doo Move II Trailers • Zinc coated
\$74.99

SEA-DOO ONLINE STORE

FAST, HANDY, CONVENIENT SHOPPING FOR
PARTS, ACCESSORIES AND RIDING GEAR.


STORE.SEA-DOO.COM




Sign up for Sea-Doo eNews and get **FREE SHIPPING** the next time you buy online.
Valid with all order of \$100 and more.

The 2013 Sea-Doo
line-up will be available
at your authorized
SEA-DOO DEALER
and **ONLINE**
in December 2012.

PARTS



The water is a big stage, and the right parts can help your Sea-Doo boat or PWC perform the role they were designed for.



5

ESSENTIAL BRP GENUINE PRODUCTS TO ENSURE A PROPER TUNE-UP



✓ MAKE THE RIGHT CHOICE

BRPs commitment to quality means that every watercraft and boat are engineered to the highest industry leading standards. Nevertheless, a lack of proper maintenance may cause even the best components to eventually fail.

By using original BRP maintenance parts, you are taking care of your investment.



XPS 4-STROKE SYNTHETIC OIL
293600112, 2936001115



IMPELLER



OIL FILTER
420956741



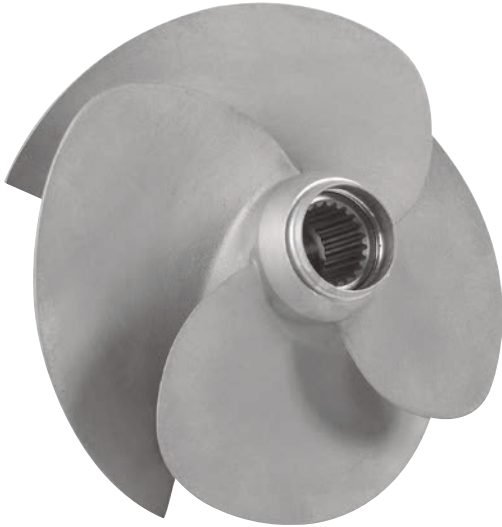
WEAR RING
2670003712



JET PUMP OIL
293600011

**PRODUCTS AVAILABLE AT YOUR AUTHORIZED
PARTICIPATING SEA-DOO DEALERS ONLY.**

Consult your authorized Sea-Doo dealer, a guarantee of excellence in the maintenance of your personal watercraft or boat. Only authorized dealers can offer original BRP, Rotax and 100% Sea-Doo products and parts.



IMPELLER

High performance impeller specifically designed to maximize your Sea-Doo watercraft & boat performance. Ask your Authorized Sea-Doo Dealer which one fits your vehicle.

	Impeller Outside Diameter		Pitch Angle	
	mm	in		
271000470	139.5	5.49	11 - 22	\$354.99
271000920	155.0	6.10	15 - 21	\$354.99
271001024	155.0	6.10	10 - 21	\$354.99
267000644	155.0	6.10	10 - 20	\$352.99
267000646	155.0	6.10	11 - 18	\$352.99
267000199	155.3	6.11	10 - 20	\$354.99
267000201	155.3	6.11	15 - 21	\$354.99
267000119	155.5	6.12	10 - 21	\$354.99
267000527	155.5	6.12	11 - 17	\$354.99
267000431	155.5	6.12	11 - 18	\$354.99
267000283	159.0	6.26	10 - 21	\$354.99
267000507	159.0	6.26	14 - 24	\$354.99
267000408	159.0	6.26	14 - 25	\$354.99
267000569	159.0	6.26	14 - 23	\$354.99
267000504	159.0	6.26	10 - 22	\$354.99
204160355	159.0	6.26	10 - 20	\$354.99
267000563	159.0	6.26	15 - 22	\$364.99
267000654	161.0	6.34	11 - 17	\$364.99
267000656	161.0	6.34	11 - 20	\$352.99



BILGE PUMP KIT

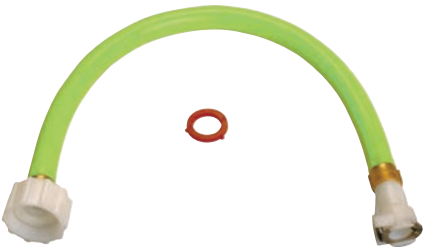
Keeps engine compartment dry. Includes 460 gph bilge pump, stainless steel mounting bracket, bilge fitting, hose and hardware necessary for installation.
295100434 • Models 2010 and up with iBR* and GTS 2011 and up
\$149.99

*Intelligent Brake and Reverse (iBR)



DRILL PUMP

Safely and easily removes engine oil.
295100244 • All 4-TEC engines
\$26.99



COUPLER HOSE

For most watercraft and boat models that already have a "T" fitting. Also for watercraft and boat models that use the flush adapter on the ride shoe water outlet.
295500258
\$24.99



FLUSH KIT

A must to help keep your engine clean. For use on older watercraft that do not yet have a "T" fitting and don't have the threaded water outlet on the ride shoe.
295500068
\$22.99



FLUSH ADAPTER

For most watercraft and boat models with a threaded water outlet fitting on the ride shoe.
295500473
\$6.99



YUASA SMART SHOT AUTOMATIC BATTERY CHARGER

The Yuasa Smart Shot automatic battery chargers are available in 900 milliamp and 1.5 amp charge capacities and ensure that optimum power is available from your battery when you need it. Both chargers are supplied with a fused-ring connector, in addition to the alligator clips that can be attached permanently to your battery, making charging and maintaining your battery a snap.

529035772 • Automatic 6/12V 1.5 amps. 5 Stage

\$87.99

529035773 • 900 Automatic 12V 900MA

\$46.99



YUASA[†] BATTERIES

Top of the line models from the leading preferred original equipment battery supplier in North America.

410301203 • 18 Amps. Wet (YTX20L-BS)

\$117.99

278001756 • 19 Amps. Dry (YB16CL-B)

\$95.99

710000283 • 13 Amps. Wet (YTX15L-BS)

\$125.99

278001882 • 30 Amps. Dry (YB30CLB)

\$165.99

410301204 • 3 Amps. Wet (YT4L-BS)

\$70.99



PISTON KIT

Everything you need in a box. Each piston kits includes: 1 OEM piston, circlip pistons and piston pin.

295501104 • 947 DI oversize

\$144.99

295501101 • 947 STD

295501102 • 947 STD oversize

295501103 • 947 DI

\$249.99



NGK[†] SPARK PLUGS

BRP dealers carry the full line of premium NGK spark plugs for Sea-Doo watercraft and boat.

707000246

\$5.99



LIFT KIT

Accurately lift and position your watercraft with a lift kit of nylon webbing and vinyl-coated steel lift plates.

529036189 • Lifting capacity of 544 kg (1200 lbs)

\$449.99

XPS ENGINE OILS



XPS 4-STROKE SYNTHETIC OIL • ALL CLIMATE GRADE

If you're performing your Sea-Doo in extreme climate conditions, this oil is the one for you. Same property as the XPS 4 stroke summer grade but with full synthetic chemistries.

293600112 • 946 ml
293600115 • 3.785 L



XPS 4-STROKE SYNTHETIC BLEND OIL • SUMMER GRADE

BRP 4-stroke engines are high output, used in the most demanding conditions, and used aggressively they need a specialized oil to handle these demands.

293600121 • 946 ml
293600122 • 3.785 L



XPS 2-STROKE SYNTHETIC OIL

A uniquely formulated low-ash 2-stroke fully synthetic injection oil. It meets the specific lubrication requirements of Sea-Doo watercraft equipped with Rotax carbureted, RFI or DI 2-stroke engines.

293600132 • 946 ml
293600133 • 3.785 L



XPS 2-STROKE SYNTHETIC BLEND OIL

This 2-stroke synthetic blend's new formulation was developed specifically for Sea-Doo watercraft with Rotax RFI and carbureted 2-stroke engines to deliver the ultimate performance. It extends engine life and reduces smoke emissions and combustion deposits compared to conventional oils.

293600100 • 946 ml
296600101 • 3.785 L



XPS 2-STROKE MINERAL OIL

Formulated and developed to work specifically in Sea-Doo watercraft equipped with Rotax carbureted 2-stroke engines.

293600117 • 946 ml
293600118 • 3.785 L

XPS MAINTENANCE PRODUCTS



XPS SYNTHETIC GREASE

Recommended for high-rev marine applications. This synthetic grease provides the best wear protection and water-resistance available.

293550010
• 400 g
\$25.99



XPS STORAGE OIL

This specialty oil is a must when putting your watercraft away for extended periods. Specially formulated to protect the engine's internal parts from the hazards of rust and corrosion due to condensation during storage or prolonged periods of non-use.

413711900
• 350 g
\$12.99



XPS LUBE

A multipurpose lubricant that prevents rust, corrosion and moisture intrusion. Contains active extreme-pressure additives which provide excellent lubrication and antiwear properties. Comes in a spray can that works even when turned upside down.

293600016
• 400 g
\$14.99



XPS 4-STROKE MAINTENANCE AND OIL CHANGE KIT

For all 4-stroke Sea-Doo engines. Kit includes: 1 gallon of XPS synthetic blend oil, oil filter, 3 NGK® spark plugs and instruction sheet.

295501075

Note: Please contact your nearest dealer for suggested retail prices of oil based products.

TOP 10

REASONS WHY YOUR ROTAX ENGINE DESERVES XPS

- 1 All climate synthetic base oils for easy starting
- 2 Additional corrosion protection for wet environments and periods of extended non-use
- 3 Friction modifiers designed for optimal clutch performance
- 4 Unique chemistry for maximum anti-wear protection
- 5 Application specific chemistries that automotive oils do not provide
- 6 Extra engine protection for heavy loads and high RPMs
- 7 Smart computer oiling system controlled in interaction with the rider's style
- 8 Extensive water testing on Sea-Doo watercraft & boat
- 9 Years of extensive R&D and rigorous testing with industry leading Rotax engines
- 10 The perfect match: ultimate performance and durable longevity

XPS CLEANERS



XPS BOAT & PWC CLEANING AND DETAILING KIT

Kit includes: All Purpose Cleaner, Boat & PWC Wash & Wax, Vinyl Cleaner, Spray Cleaner & Polish, 2 Microfiber Towels, Deluxe Wash Sponge.

219701715

\$64.99

All these products are available individually.

219701709	XPS All Purpose Cleaner • 946 ml	\$9.99
219701710	XPS Vinyl Cleaner • 946 ml	\$14.99
219701706	XPS Spray Cleaner & Polish • 397 g	\$11.99
219701711	XPS Boat & PWC Wash & Wax • 946 ml	\$11.99
219701714	XPS PWC, Snowmobile and Roadster Quik Detailing Kit	\$21.99



XPS MICROFIBER TOWELS

Made up of extremely fine fibers, their soft surfaces have been perfected for drying and polishing motorcycles, boats, cars or any shiny finish. Hold up to seven times their weight in water. Machine washable. Pack of 2.

219701759

\$9.99



XPS FUEL STABILIZER

Fuel additive to protect against fuel contamination and residue build-up in carburetors and gas lines. Should always be used before storing your watercraft for any long period of time. Suitable for all gasoline engines.

413408601 • 240 ml

\$12.99



PRE-MIXED ANTIFREEZE/COOLANT

Pre-mixed ready to top up your coolant level. Blended to perform best in our Rotax engines with anti-corrosive additive.

219700362 • 1 liter

\$10.99



XPS JET PUMP OIL

Helps maintain the life of your Sea-Doo watercraft jet pump.

293600011 • 170 g

\$20.99

RIDE IT HARD. TREAT IT RIGHT.



**XPS. THE ONLY OIL ENGINEERED BY BRP
FOR THE LEVEL OF PERFORMANCE YOU EXPECT.**

FOR OUR EXCLUSIVE OFFER,
VISIT XPSPROMOTION.COM AND ENTER THIS CODE **XV3E4C8**

FOR THE FULL XPS STORY, VISIT XPSLUBRICANTS.COM



THE WORLD IS OUR PLAYGROUND

Nothing is more valuable than your playtime. That is why BRP is dedicated to continually finding new and better ways to help you enjoy your favorite power sports. From snow to water to both on- and off-road fun, our passion for adventure fuels the innovations that result in the ultimate power sports experience for our customers. We value



the land and water we play on and are committed to protecting it. Our desire to thrill is paired with an emphasis on rider responsibility, placing personal safety above all else. So that each outing can be the most enjoyable, memorable and thrilling experience possible. Because your free time should always be your best time.

www.brp.com



SKI-DOO®

LYNX®

SEA-DOO®

EVINRUDE®

JOHNSON®

ROTAX®

CAN-AM®