

2010 CATALOG

PARTS | ACCESSORIES | RIDING GEAR



T A B L E O F C O N T E N T S

RIDING GEAR

YOUR RIDE. YOUR STYLE.	3
MUSCLECRAFT	4
SPORT	8
LUXURY PERFORMANCE	10
RECREATION	12
PFD SELECTION CHART	14
PFDs	15
WETSUITS & RASHGUARDS	21
BOOTIES & GLOVES	30
MEN'S SPORTSWEAR	31
LADIES' SPORTSWEAR	36
KIDS' SPORTSWEAR	39
SIZING CHART	40
APPROPRIATE GEAR TO WEAR	41

PARTS & ACCESSORIES

PWC	42
ADVANCED TEC TRAILERS	44
SPORT BOATS	56
MULTI-FIT	60
MAINTENANCE	63
DECALS	65

ALL PRODUCTS APPEARING IN THIS CATALOG ARE CARRIED EXCLUSIVELY BY AND AVAILABLE ONLY AT AUTHORIZED SEA-DOO DEALERS. THE LOCATION OF THE DEALER NEAREST YOU IS ONLY A CALL OR A CLICK AWAY: DIAL 1 800-882-2900 OR SURF WWW.BRP.COM.

For advertising purposes, some scenes depicted in this brochure include professional riders and operators executing maneuvers under ideal and/or controlled conditions. Do not attempt any of these or any other risky maneuver if they're beyond your level of riding ability, as well as your understanding and respect for the performance of your Sea-Doo watercraft or Sport Boat. RIDE SMART FROM THE START. Always ride responsibly and safely. Follow all instructional and safety materials. BRP recommends a minimum operator age of 16 years old for riding a watercraft. Always wear appropriate protective clothing for your type of boating use, including a Coast Guard approved personal flotation device. Always remember that riding and alcohol/drugs don't mix. Operate your craft keeping a safe distance between yourself and others. Always observe applicable local laws and regulations. Because of its ongoing commitment to product quality and innovation, BRP reserves the right, at any time, to discontinue or change specifications, prices, designs, features, models or equipment without incurring any obligations. Some models depicted herein may include optional equipment. Prices are based on Manufacturer Suggested Retail Prices. Dealers may sell for a different price. Taxes not included. In the U.S.A., products are distributed by BRP US Inc. In Canada, products are distributed by Bombardier Recreational Products Inc. ® are registered trademarks and ™ and the BRP logo are trademarks of Bombardier Recreational Products Inc. or its affiliates. * is a trademark of Bombardier Inc. used under license. Velcro is a registered trademark of Velcro Industries. Clarino is a trademark of Kuraray Co. Ltd. Lycra is a trademark of E.I. DuPont de Nemours & Co. Sunbrella is a registered trademark of Glen Raven, Inc. 3M is a registered trademark of 3M. Otter Box is a registered trademark of Otter Products LLC. YUASA is a registered trademark of YUASA Batteries Inc. Garmin is a registered trademark of Garmin Ltd. RAM is a registered trademark of National Products Inc. GTX is a registered trademark of Castrol Limited, used under license. All other company and/or product names are trademarks or registered trademarks of their respective holders.

© 2009 Bombardier Recreational Products Inc. All rights reserved. Printed in Canada.

**YOUR
RIDE.**

**YOUR
STYLE.**

MUSCLE



PERFORMANCE X-TEAM COMBO SUIT
712700 \$209.99



X-TEAM NEOPRENE RIDING JACKET
813000 \$139.99



X-TEAM SPRINGSUIT
714500 \$119.99

E-CRAFT



AIRFLOW SPECIAL EDITION PFD
285735 \$184.99



FREEWAVE PFD
285727 \$124.99



FULL-FINGER VEHICLE GLOVES
286173 \$49.99



SEA-DOO BOOTIES
285702 \$94.99

MUSCLE



PERFORMANCE X-TEAM COMBO SUIT
712700 \$209.99



X-TEAM NEOPRENE RIDING JACKET
813000 \$139.99



X-TEAM SPRINGSUIT
714500 \$119.99

E-CRAFT

7



FREEWAVE PFD
285727 \$124.99



MOTION PFD
285729 \$74.99



FULL-FINGER VEHICLE GLOVES
286173 \$49.99



SEA-DOO BOOTIES
285702 \$94.99

S P C



MEN'S RASHGUARD
716800 \$29.99



MEN'S NEOPRENE SHORTS
812900 \$49.99



LADIES' WAKE SHIRT
721000 \$84.99



LADIES' NEOPRENE SHORTS
813100 \$44.99

SPORT



LADIES' SPORT SPRINGSUIT
714800 \$94.99



MEN'S AIRFLOW PFD
285734 \$159.99



LADIES' MOTION PFD
285747 \$74.99



NEO/NYLON PFD
286183 \$79.99



MEN'S DELUXE COMBO
712500 \$219.99



LADIES' DELUXE COMBO
712600 \$199.99



MEN'S NEOPRENE RIDING JACKET
812600 \$139.99



PERFORMANCE

11



MEN'S AIRFLOW PFD
285734 \$159.99



MEN'S MOTION PFD
285729 \$74.99



LADIES' FREEWAVE PFD
285728 \$124.99



LADIES' AIRFLOW PFD
285738 \$159.99

RECRE



JR FREEWAVE PFD
285741 \$99.99



NEO/NYLON PFD
286183 \$79.99



SANDSEA PFD
285726 \$59.99



LADIES' MOTION PFD
285747 \$74.99

ATTENTION



YOUTH SANDSEA SPRINGSUIT
612900 \$44.99

LADIES' SANDSEA SPRINGSUIT
612800 \$54.99

MEN'S SANDSEA SPRINGSUIT
612700 \$54.99

SEA-DOO PFD SELECTION CHART

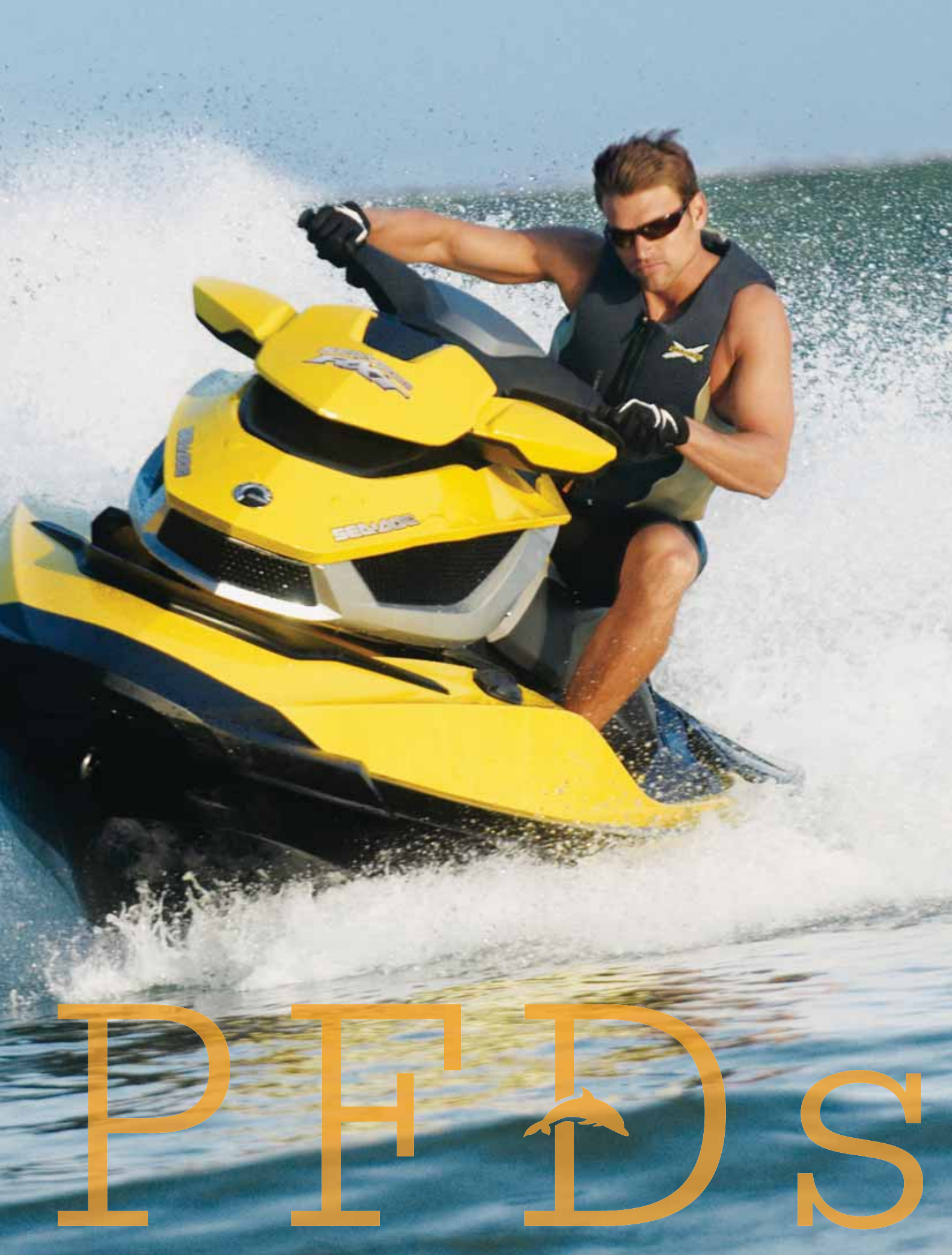
Please use this chart to choose the pfd that is the right fit for you.

The chart below simplifies the technical jargon down to the key practical features and benefits by PFD type, so you can conveniently evaluate and match your selection to what you're essentially looking for in a quality PFD. All Sea-Doo PFDs are Coast Guard approved, designed to color match your PWC, and meet high safety standards. Some models even rate higher than competing PFD brands for PWC use.

FIT YOUR CHOICE TO YOUR PERSONAL NEEDS AND END-USE*.

CATEGORIES	NYLON	NEO-NYLON	NEOPRENE	ECOPRENE
MODELS	 <p><i>Motion (4 buckles)</i> <i>Sandsea (3 buckles)</i> <i>Navigator (dual size)</i></p>	 <p><i>Neo-Nylon</i></p>	 <p><i>Freewave</i></p>	 <p><i>Airflow Special Edition</i> <i>Airflow</i></p>
FEATURES & BENEFITS	Lightweight, excellent wear and flex fatigue resistance, low water absorption.	The advantages of a nylon PFD plus the stretchability of Neoprene at shoulders for a more technical fit.	Offers more warmth, a better fit, more comfort and greater ease of movement.	The advantages of neoprene with optimum protection, plus these ecoprene PFDs are 30% lighter than the standard neoprene PFDs. These eco-friendly PFDs also dry faster, take on less water and stay much cooler than their neoprene counterparts.
RIDING STYLE	Ideal for riders looking for an affordable, dependable all purpose PFD.	Riders looking for a dependable all purpose PFD combined with added comfort.	Sport riders looking for a more technical and fitted PFD.	High energy riders looking for a pro type PFD that is also green manufactured. Ideal for water sports such as wake and ski.
VALUE RANGE	\$	\$\$	\$\$\$	\$\$\$\$
COAST GUARD CERTIFIED	Good	Good	Good	Good
LIGHTWEIGHT	Good	Good	Good	Good
COOLER CONDITIONS	Good	Good	Good	Good
WARMER CONDITIONS	Good	Good	Good	Good
COMFORT & FIT	Good	Good	Good	Good
QUICK-DRY	Good	Good	Good	Good
ECO-FRIENDLY	Good	Good	Good	Good
Good —————> Excellent 				

*Please note that PFD's SKU varies according to market (U.S., Canada, International) and model (Men's, Ladies').



PFDs

AIRFLOW TECHNOLOGY

So light, at 30% less than a neoprene PFD, and so comfortable, you'll simply forget that you're wearing it. The water-repellency combined with the new EVA molding and mesh side panels will ensure ultimate comfort and complete climate control.



Improved fit. Eco-friendly. Softer, lighter, more durable vest interior constructed of 100% PVC-free Biofoam. Breathable and water-repellent. Eco-prene outer shell and lining. 2 woven straps with quick release buckles. Side and center back Glideskin panels (on Special Edition models only). Heavy-duty front zipper. D-ring for floating lanyard. U.S. Classification – Type III.

MEN'S AIRFLOW SPECIAL EDITION

SIZES: S, M, L, XL, 2XL

■ 285735 - CHARCOAL GREY (07)

■ 285735 - TOPAZ (92)

\$184.99



LADIES' AIRFLOW SPECIAL EDITION

SIZES: S, M, L, XL, 2XL

□ 285743 - WHITE (01)

\$184.99



MEN'S AIRFLOW

SIZES: S, M, L, XL, 2XL

■ 285734 - RED (30)

■ 285734 - BLACK (90)

\$159.99



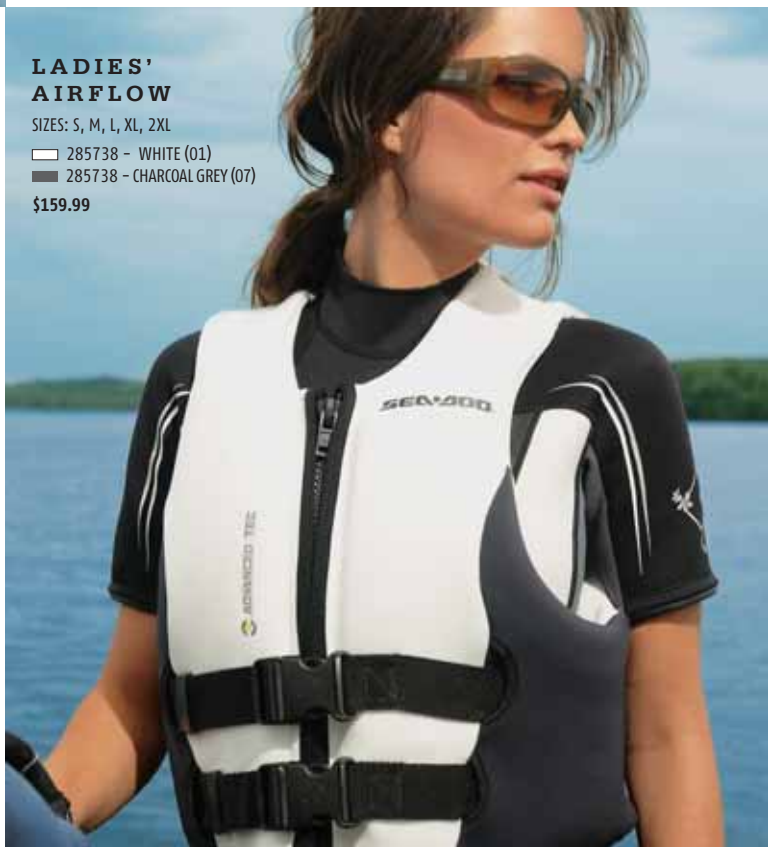
LADIES' AIRFLOW

SIZES: S, M, L, XL, 2XL

□ 285738 - WHITE (01)

■ 285738 - CHARCOAL GREY (07)

\$159.99



FREEWAVE

Ultra-durable neoprene outer shell and lining. Soft, beveled PVC foam inserts. 2 woven straps with quick release buckles. Strategically-placed mesh drain panels. Armholes cut large for riding comfort. Heavy-duty front zipper. Split tail comfort design. D-ring for floating lanyard. U.S. Classification – Type III.



MEN'S FREEWAVE

SIZES: S, M, L, XL, 2XL

285727 - WHITE (01)
 285727 - YELLOW (10)

285727 - ORANGE (12)
 285727 - ROYAL BLUE (83)

\$124.99

LADIES' FREEWAVE

SIZES: S, M, L, XL, 2XL

285728 - GREY (09)
 285728 - NAVY (89)

285728 - BLACK (90)

\$124.99



MOTION

Super-duty nylon outer shell. Combination of PVC and polyethylene foam inserts. Seat contour system for increased comfort while seated (on Men's models only). 4 woven straps with quick release buckles (except size XL (US) with 3 buckles on Ladies' models only). Reinforced seams with vinyl piping. Armholes cut large for riding comfort. D-ring for floating lanyard. U.S. Classification – Type III.



LADIES' MOTION

SIZES: XS, S, M, L, XL

■ 285747 - GREY (09) ■ 285747 - RED (30)
■ 285747 - LIGHT BLUE (81) ■ 285747 - BLACK (90)

\$74.99

MEN'S MOTION

SIZES: S, M, L, XL, 2XL, 3XL

■ 285729 - GREY (09) ■ 285729 - RED (30)
■ 285729 - BLUE (80) ■ 285729 - BLACK (90)

\$74.99

NAVIGATOR

Super-duty nylon outer shell. Polyethylene foam inserts. 4 woven straps with quick release buckles. Armholes cut large for riding comfort. D-ring for floating lanyard. U.S. Classification – Type III.

SIZES: XS, S/M, L/XL, 2XL/3XL

■ 286185 – AUTUMN RED (14)
■ 286185 – NAVY (89)

■ 286185 – RED (30)
■ 286185 – BLACK (90)

\$49.99



SANDSEA

Super-duty nylon outer shell. Combination of PVC and polyethylene foam inserts. 3 woven straps with quick release buckles. Reinforced seams with vinyl piping. Armholes cut large for riding comfort. D-ring for floating lanyard. U.S. Classification – Type III.

SIZES: S, M, L, XL, 2XL, 3XL

■ 285726 – YELLOW (10)
■ 285726 – BLUE (80)

■ 285726 – RED (30)
■ 285726 – BLACK (90)

\$59.99



NEO/NYLON

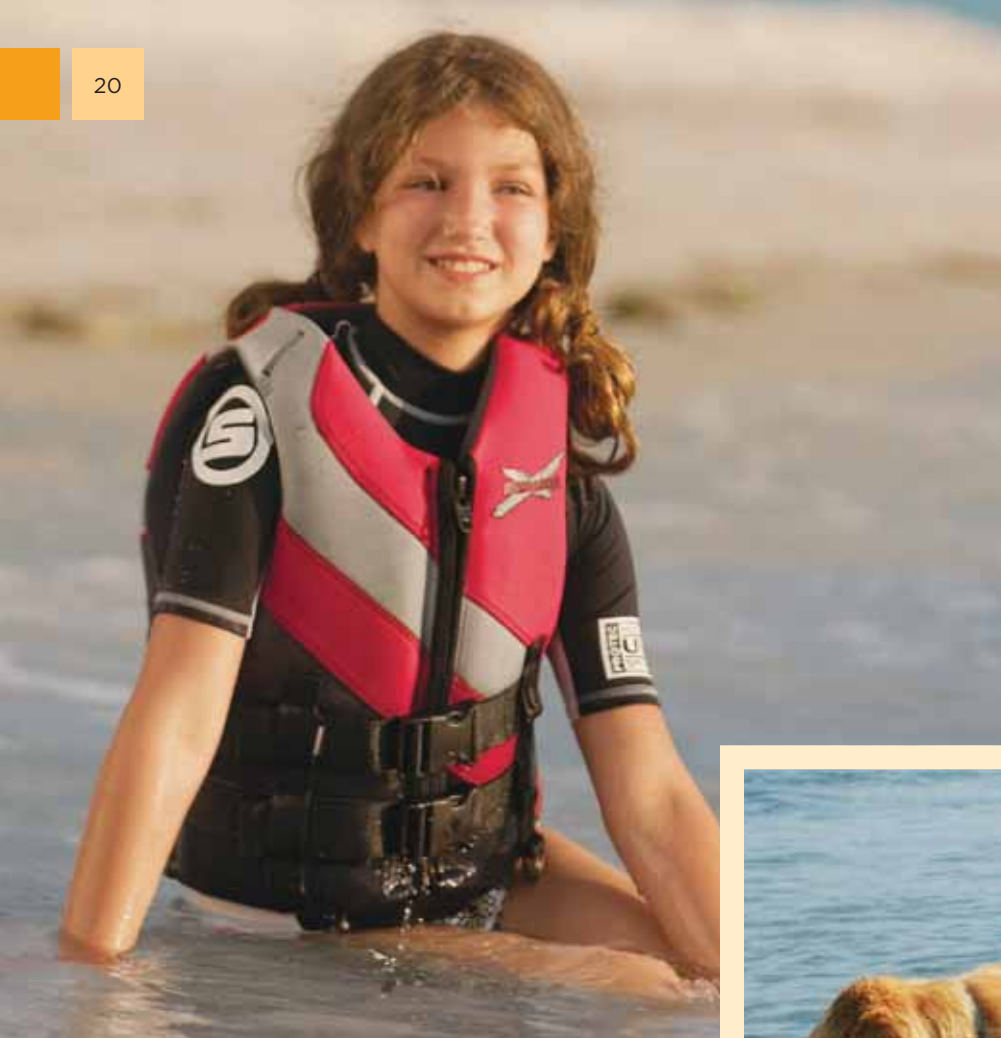
Neoprene on sides for better comfort. Combination of neoprene and super-duty nylon outer shell and lining. Combination of PVC and polyethylene foam inserts. Anatomically cut. 4 heavy-duty straps with quick release buckles. Armholes cut large for riding comfort. U.S. Classification – Type III.

SIZES: S, M, L, XL, 2XL

■ 286183 – YELLOW (10)
■ 286183 – BLACK (90)

■ 286183 – RED (30)

\$79.99



JR FREEWAVE

Ultra-durable neoprene outer shell and lining. Soft PVC foam inserts. 2 woven straps with quick release buckles. Armholes cut large for comfort. Heavy-duty front zipper. D-ring for floating lanyard. U.S. Classification – Type III.

ONE SIZE (50-90 LBS)

285741 – YELLOW (10)

285741 – RED (30)

\$99.99



PET PFD

Super-duty nylon outer shell. Polyethylene foam inserts. Heavy-duty straps with 3 quick release buckles, 2 at torso and 1 at neck. Convenient handle located on back.

SIZES: S/M, L/XL

285699 – YELLOW (10)

\$32.99



KIDS' SANDSEA

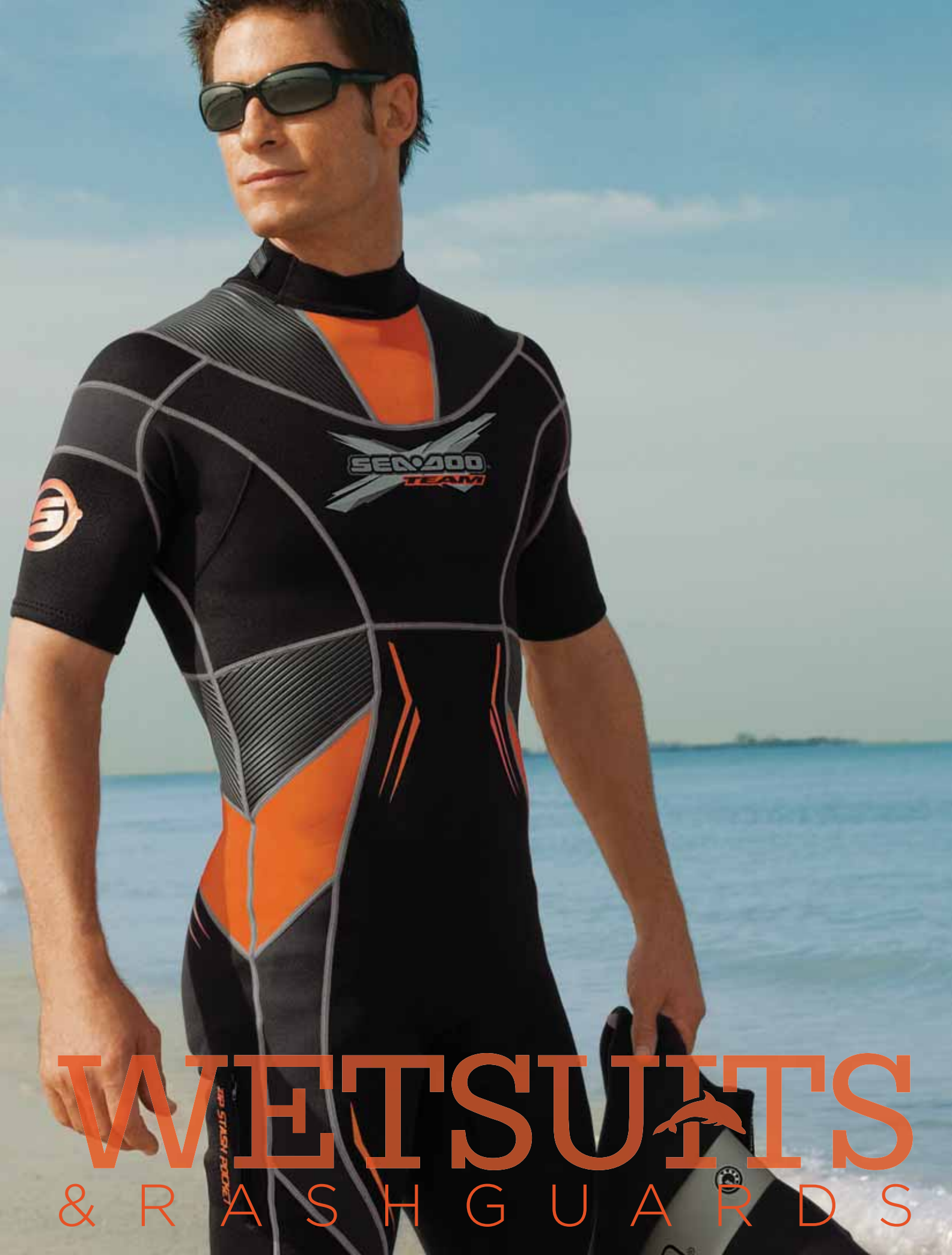
Super-duty nylon outer shell. Polyethylene foam inserts. 3 woven straps with quick release buckles. Reinforced seams with vinyl piping. Armholes cut large for comfort. D-ring for floating lanyard. U.S. Classification – Type III. *Small size PFDs come standard with Coast Guard approved pillow.*

SIZES: S (LESS THAN 30 LBS), M (30-50 LBS), L (50-90 LBS)

285745 – YELLOW (10)

285745 – BLUE (80)

\$49.99



WETSUITS
& RASH GUARDS

LUXURY PERFORMANCE

MEN'S DELUXE COMBO SUIT

3/2 mm neoprene. Luxury jacket with front zipper and sleeveless wetsuit combo. Underarm & side panels with stretch neoprene. Embossed back of knees for ease of bending. Textured shinpads. Velcro shoulder closure.

SIZES: S, M, L, XL, 2XL

■ 712500 - BLACK (90)

■ 712500 - BRONZE (92)

\$219.99



MEN'S NEOPRENE RIDING JACKET

2 mm neoprene jacket. 2 way front zipper. Embossed inner elbow for ease of bending. Front pockets. Plush lined hood. Back slit in hem for ease of sitting. Can be worn independently or over a PFD.

SIZES: M, L, XL, 2XL

■ 812600 - BLACK (90)

\$139.99

LADIES' DELUXE COMBO SUIT

3/2 mm neoprene. Luxury jacket with front zipper and sleeveless wetsuit combo. Underarm & side panels with stretch neoprene. Embossed back of knees for ease of bending. Textured shinpads. Velcro shoulder closure.

SIZES: 6, 8, 10, 12, 14

712600 - BLACK (90)

\$199.99



MUSCLECRAFT



MEN'S X-TEAM FULLSUIT

Fullsuit 5 mm/4 mm fine mesh skin front & back panels made especially for cold weather. 5 mm lower body neoprene/4 mm sleeves. Grooved skin shoulders & side panels. Stretch neoprene underarms, back of legs & sleeves. Embossed back of knees for ease of bending. Textured shinpads and kneepads. Back zipper closure.

SIZES: S, M, L, XL, 2XL

- 713700 - RED (30) - 5/4 mm NEOPRENE
- 713700 - WHITE (01) - 5/4 mm NEOPRENE

\$249.99

- 713800 - WHITE (01) - 3/2 mm NEOPRENE

\$229.99



MEN'S PERFORMANCE COMBO SUIT

3/2 mm neoprene pullover jacket and sleeveless wetsuit combo. Underarm & side panels with stretch neoprene. Back zip on John. Embossed inner elbow for ease of bending.

SIZES: S, M, L, XL, 2XL

- 712800 - GREY (09)

\$209.99

MEN'S PERFORMANCE X-TEAM COMBO SUIT

3/2 mm neoprene X-Team pullover jacket and sleeveless wetsuit combo. Underarm & side panels with stretch neoprene. Back zip on John. Embossed inner elbow for ease of bending.

SIZES: S, M, L, XL, 2XL

- 712700 - DRAGON RED (30)
- 712700 - YELLOW (10)

\$209.99



MEN'S X-TEAM SPRINGSUIT

2 mm neoprene wetsuit with X-Team logo on front panel. Lower front/back & underarm panels with stretch neoprene. Smoothskin collar with adjustable Velcro for better comfort. Zip stash pocket.

SIZES: S, M, L, XL, 2XL

■ 714500 - DRAGON RED (30)
■ 714500 - YELLOW (10)

\$119.99



MEN'S SPRINGSUIT

2 mm neoprene. Lower front/back & underarm panels with stretch neoprene. Smoothskin collar with adjustable Velcro for better comfort. Zip stash pocket.

SIZES: S, M, L, XL, 2XL

□ 714700 - WHITE (01)

\$119.99



MEN'S X-TEAM NEOPRENE RIDING JACKET

2 mm neoprene X-Team jacket. 2 way front zipper. Embossed inner elbow for ease of bending. Front pockets. Plush lined hood. Back slit in hem for ease of sitting. Can be worn independently or over a PFD.

SIZES: M, L, XL, 2XL

■ 813000 - DRAGON RED (30)
■ 813000 - YELLOW (10)

\$139.99



MEN'S X-TEAM PRO RASHGUARD

8 oz. (227 g) X-Team rashguard Nylon / Spandex with SPF 50 UV protection. Mock turtleneck collar design. Board short connector.

SIZES: S, M, L, XL, 2XL

■ 715700 - RED (30)
■ 715700 - YELLOW (10)

\$39.99

SPORT

**MEN'S WAKE SHIRT**

1 mm stretch neoprene. Protects against wind chill. Elastic drawcord at waist and board short connector.

SIZES: S, M, L, XL, 2XL

■ 720000 - RED (30)

■ 720000 - GREY (09)

\$84.99

MEN'S NEOPRENE SHORT

2 mm neoprene. Elastic waist with drawstring. Stretch crotch panels.

SIZES: S, M, L, XL

■ 812900 - BLACK (90)

■ 812900 - GREY (09)

\$49.99

**MEN'S PRO RASHGUARD**

8 oz. (227 g) X-Team rashguard Nylon / Spandex with SPF 50 UV protection. Mock turtleneck collar design. Board short connector.

SIZES: S, M, L, XL, 2XL

■ 715800 - GREY (09)

\$39.99

**MEN'S RASHGUARD**

6 oz. (170 g) Nylon / Spandex with SPF 50 UV protection. Mock turtleneck collar design. Board short connector.

SIZES: S, M, L, XL, 2XL

■ 716800 - BLACK (90)

□ 716800 - WHITE (01)

■ 716800 - RED (30)

\$29.99

LADIES' SPORT SPRINGSUIT

2 mm neoprene. Sleeve, side legs and lumbar stretch neoprene. Sporty length on sleeves and legs.

SIZES: 6, 8, 10, 12, 14

714800 - WHITE (01)

\$94.99



LADIES' WAKE SHIRT

1 mm stretch neoprene. Protects against wind chill. Elastic drawcord at waist and board short connector.

SIZES: 6, 8, 10, 12, 14

721000 - BLACK (90)

\$84.99

LADIES' NEOPRENE SHORT

2 mm neoprene. Elastic waist with drawstring. Seat & crotch seams are reinforced with heat tape.

SIZES: S, M, L, XL

813100 - BLACK (90)

\$44.99



LADIES' RASHGUARD

6 oz. (170 g) Nylon / Spandex with SPF 50 UV protection. Mock turtleneck collar design. Board short connector.

SIZES: S, M, L, XL, 2XL

716900 - BLACK (90)

716900 - WHITE (01)

\$29.99



LADIES' PRO RASHGUARD

8 oz. (227 g) rashguard Nylon / Spandex with SPF 50 UV protection. Mock turtleneck collar design. Board short connector.

SIZES: S, M, L, XL, 2XL

715900 - BLACK (90)

715900 - WHITE (01)

\$39.99



RECREATION



MEN'S SANDSEA SPRINGSUIT

2 mm neoprene. Underarm and lumbar stretch panels for more flexibility. Smoothskin collar with adjustable Velcro for better comfort. Smoothskin seals on sleeves and legs. Zip stash pocket.

SIZES: S, M, L, XL

- 612700 - WHITE (01)
- 612700 - GREY (09)
- 612700 - RED (30)
- 612700 - ORANGE (12)

\$54.99



LADIES' SANDSEA SPRINGSUIT

2 mm neoprene. Underarm and lumbar stretch panels for more flexibility. Smoothskin collar with adjustable Velcro for better comfort. Smoothskin seals on sleeves and legs. Zip stash pocket.

SIZES: 6, 8, 10, 12

- 612800 - WHITE (01)
- 612800 - BLACK (90)
- 612800 - BLUE (80)

\$54.99

YOUTH

YOUTH RASHGUARD

6 oz. (170 g) Nylon / Spandex with SPF 50 UV protection. Mock turtleneck collar design.

SIZES: 6, 8, 10, 12, 14

■ 717000 - BLUE (80)

■ 717000 - PINK (36)

■ 717000 - BLACK (90)

\$24.99



YOUTH SANDSEA SPRINGSUIT

2 mm neoprene. Underarm and lumbar stretch panels for more flexibility. Smoothskin collar with adjustable Velcro for better comfort. Smoothskin seals on sleeves and legs. Zip stash pocket.

SIZES: 8, 10, 12, 14

□ 612900 - WHITE (01)

■ 612900 - BLUE (80)

■ 612900 - YELLOW (10)

\$44.99



SEA-DOO TOWEL

100% Cotton Velour Fiber. 30" x 59" (75 x 150 cm). Sea-Doo logo.

ONE SIZE

□ 8124000001 - WHITE (01)

\$29.99



FULL-FINGER VEHICLE GLOVES

Neoprene gloves. Spandex finger gussets. Clarino® Nash palm. Silicone print at palm for superior grip. Rubberized Pro-Grip thumb. Double-stitching at high stress areas. Adjustable Velcro wrist closure. Direct injection patches at fingers and backhand. Embossed details at backhand.

44% Nylon, 27% Chloroprene Rubber, 21% Polyurethane, 8% Spandex

SIZES: XS, S, M, L, XL

■ 286173 - BLACK (90)

\$49.99



SHORTY VEHICLE GLOVES

Neoprene gloves. Spandex finger gussets. Clarino Nash palm. Silicone print at palm for superior grip. Rubberized Pro-Grip thumb. Double-stitching at high stress areas. Adjustable Velcro wrist closure. Direct injection patches at fingers and backhand. Embossed details at backhand.

49% Nylon, 34% Chloroprene Rubber, 10% Polyurethane, 7% Spandex

SIZES: XS, S, M, L, XL

■ 286174 - BLACK (90)

\$40.99



FULL-FINGER GLOVES

The ideal mix of Glideskin and neoprene. Spandex finger gussets. Inverted seams provide a comfortably seamless feel. Clarino Nash palm. Silicone print at palm. Rubber reinforcement between thumb and forefinger. Double-stitching at high stress areas. Adjustable Velcro wrist closure. Direct injection patches at fingers and backhand. Embossed logo at backhand.

44% Nylon, 27% Chloroprene Rubber, 21% Polyurethane, 8% Spandex

SIZES: XS, S, M, L, XL

■ 285704 - BLACK (90)

\$49.99



SHORTY GLOVES

The ideal mix of Glideskin and neoprene. Spandex finger gussets. Inverted seams provide a comfortably seamless feel. Clarino Nash palm. Silicone print at palm. Rubber reinforcement between thumb and forefinger. Double-stitching at high stress areas. Adjustable Velcro wrist closure. Direct injection patches at fingers and backhand. Embossed logo at backhand.

49% Nylon, 34% Chloroprene Rubber, 10% Polyurethane, 7% Spandex

SIZES: XS, S, M, L, XL

■ 285703 - BLACK (90)

\$40.99



SEA-DOO BOOTIES

Easy one-hand lace system with side hooks. 4 mm interior neoprene sock. Injection-molded toe and heel cap. Anatomic and pre-shaped design. Heel cup support. Mesh panels and perforated sole for water evacuation. Interior foam cushion at ankle. Rubber logo patch.

SIZES: 6, 7, 8, 9, 10, 11, 12

■ 285702 - BLACK (90)

\$94.99



MENT'S

SPORTSWEAR



FREEWAVE JACKET

Designed to keep you comfortable on windy/chilly days. Lightweight, breathable, supple with a touch of stretch. Treated with durable water repellent to protect from drizzle or light rain. Pre-shaped sleeves. Full length inner flap with chin guard. Adjustable hem and wrist. Three easy access pockets.

92% Polyamid, 8% Spandex

SIZES: M, L, XL, 2XL

■ 286171 - GREY (09)

\$119.99

SEA-DOO TECHNICAL BOARDSHORT

Functional in water, fashionable out of the water. Quick-dry fabric with peach finish. Lightweight stretch neoprene removable lining. One zippered pocket on right side. Tie waist closure. Lycra® fly. Reinforced crotch seams.

100% Polyester

SIZES: 28, 30, 32, 34, 36, 38

■ 286169 - RED (30)

■ 286169 - BLUE (80)

■ 286169 - BLACK (90)

\$84.99





MICRO POLYESTER TOP

4-way stretch fabric. Ideal for late-day wear, to keep you dry and regulate body temperature.

100% Polyester

SIZES: M, L, XL, 2XL

■ 286170 - NAVY (89)

\$69.99



VEHICLE'S CAP

Stretch twill cap with contrasting rubber details. X-Team rubber patch on Charcoal Grey version and Sea-Doo logo on White version.

98% Cotton, 2% Spandex

SIZES: S/M, L/XL

□ 286159 - WHITE (01)

■ 286159 - CHARCOAL GREY (07)

\$29.99



SEA-DOO CLASSIC CAP

Lightweight and breathable cap. Rubber detail on peak with Sea-Doo embroidery on back closure. Metal adjuster with BRP logo.

100% Polyester

ONE SIZE

■ 286160 - GREY (09)

■ 286160 - RED (30)

■ 286160 - BLACK (90)

\$29.99

WAVE CAP

Lightweight, quick-dry cap with mesh insert. Sea-Doo brushed metal badge.

60% Cotton, 38% Polyester, 2% Spandex

ONE SIZE

□ 286158 - WHITE (01)

■ 286158 - NAVY (89)

■ 286158 - BLACK (90)

\$24.99



COOL TEE

Very comfortable quick-dry tee. Printed logo.

92% Cotton, 8% Spandex

SIZES: M, L, XL, 2XL

286167 - GREY (09)

286167 - RED (30)

\$49.99



BODY MAPPING TEE

Body mapping polyester to keep you dry and cool with ventilation zones. Quick-dry, moisture-wicking fabric. Printed reflective logos.

100% Polyester

SIZES: M, L, XL, 2XL

286166 - WHITE (01)

286166 - BLACK (90)

\$49.99



RIPSTOP BOARDSHORT

Casual and comfortable lightweight, quick-dry ripstop nylon. Two side zippered pockets. Two back pockets. Inner mesh lining. Reinforced crotch seams.

100% Nylon

SIZES: 28, 30, 32, 34, 36, 38

286168 - BEIGE (02)

286168 - CHARCOAL GREY (07)

\$59.99



BODY MAPPING POLO

Body mapping to keep you dry and cool with surround-body ventilation zones. Quick-dry, moisture-wicking fabric. 2 buttons, hidden placket. X-Team reflective logo on Charcoal Grey version and dolphin reflective logo on White version.

100% Polyester

SIZES: M, L, XL, 2XL

☐ 286163 - WHITE (01)

■ 286163 - CHARCOAL GREY (07)

\$59.99



SEA-DOO POLO

Stretchable fabric. Zippered opening. Dolphin metal logo at chest.

95% Cotton, 5% Spandex

SIZES: M, L, XL, 2XL

☐ 286165 - WHITE (01)

■ 286165 - BLUE (80)

■ 286165 - BLACK (90)

\$40.99

SEA-DOO SHORT SLEEVE SHIRT

Lightweight, quick-dry and comfortable ripstop short sleeve shirt. Dolphin metal pin at chest and print on sleeve.

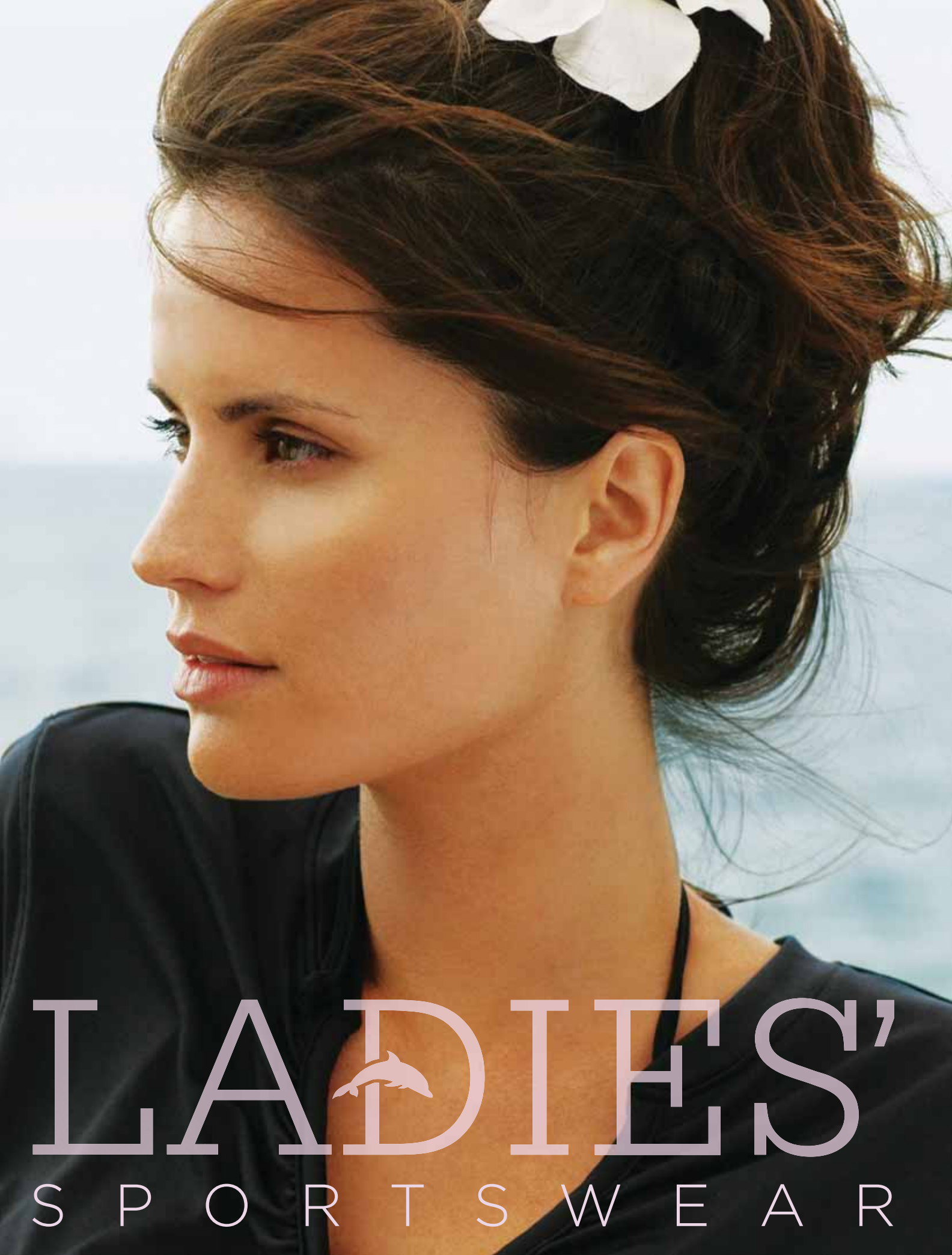
100% Polyester

SIZES: M, L, XL, 2XL

☐ 286164 - WHITE (01)

■ 286164 - BLACK (90)

\$49.99



LADIES'

S P O R T S W E A R



FREEWAVE JACKET

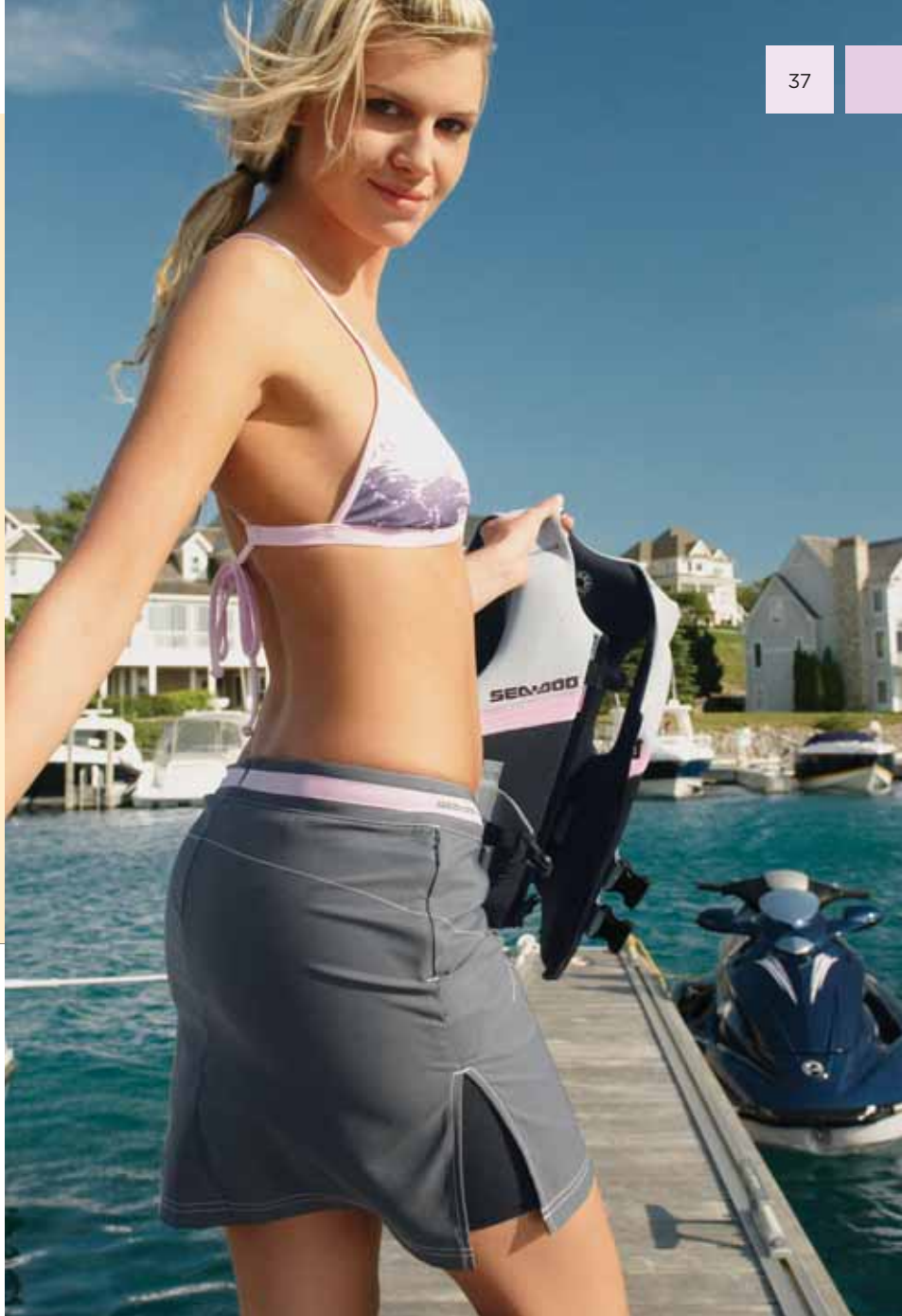
Designed to keep you comfortable on windy/chilly days. Lightweight, breathable, supple with a touch of stretch. Treated with durable water repellent to protect from drizzle or light rain. Pre-shaped sleeves. Full length inner flap with chin guard. Adjustable hem and wrist. Two pockets at waist level and one on right sleeve. Very feminine, flattering cut.

92% Polyamid, 8% Spandex

SIZES: S, M, L, XL

■ 286172 - GREY (09)

\$119.99



TECHNICAL RIDING SKIRT

Quick-dry stretch polyester skirt. Slit on side to increase mobility. Removable lightweight 4-way stretch neoprene short for enhanced comfort while riding. Side zippered pocket. Contrasting details.

88% Polyester, 12% Spandex

SIZES: 26, 28, 30, 32, 34, 36, 38

■ 286179 - CHARCOAL GREY (07)

■ 286179 - RED (30)

\$64.99

VISOR CAP

Visor in light herringbone. Dolphin metal pin at front with Sea-Doo embroidery on back closure.

100% Cotton

ONE SIZE

■ 286162 - RED (30)

■ 286162 - LILAC (40)

■ 286162 - NAVY (89)

\$24.99





SEA-DOO HALTER TOP

Feminine halter neck made of comfortable and stretchable poly terry. Flattering V-shaped neckline, tie-up straps. Lightweight, dries faster than cotton. Dolphin embroidery. Matches perfectly with poly terry skirt.

100% Polyester

SIZES: S, M, L, XL

□ 286178 - WHITE (01)

■ 286178 - NAVY (89)

\$34.99

POLY TERRY SKIRT

Combines the comfort of stretchable terry with the benefits of quicker-drying polyester. Lightweight with elasticized ribbed waist. Ready-slips over swimwear for instant cover, warmth and dryness. Contrasting flatlock with dolphin embroidery. Matches perfectly with Sea-Doo halter top.

100% Polyester

SIZES: S, M, L, XL

□ 286180 - WHITE (01)

\$29.99



VACATION TEE

V-shaped neckline with 2 buttons. Pleated detail at front and on sleeve. Stretchable fabric. Screenprint logo at front.

95% Cotton, 5% Spandex

SIZES: XS, S, M, L, XL

□ 286177 - WHITE (01)

■ 286177 - BLACK (90)

\$29.99



TECHNICAL TEE

Fitted t-shirt with cap sleeves. Quick-dry, moisture-wicking stretch polyester fabric. Printed reflective logos.

92% Polyester, 8% Spandex

SIZES: S, M, L, XL

□ 286175 - WHITE (01)

■ 286175 - GREY (09)

\$49.99

SEA-DOO POLO

Short sleeve polo. Contrasting open placket with button. Contrasting stripes on rib collar and on side. Sea-Doo reflective signature on right sleeve.

95% Cotton, 5% Spandex

SIZES: XS, S, M, L, XL

286176 - WHITE (01)

286176 - LILAC (40)

286176 - NAVY (89)

\$40.99



KIDS' SEA-DOO POLO

Stretchable fabric. X-Team screenprint logo on Orange version and dolphin metal logo at chest on Red version.

95% Cotton, 5% Spandex

SIZES: 2, 3-4, 5-6, 7-8

286181 - ORANGE (12)

286181 - RED (30)

\$24.99



KIDS' X CAP

Twill cap with contrasting rubber details and X-Team rubber patch. Metal adjuster with BRP logo.

100% Cotton

ONE SIZE

286161 - CHARCOAL GREY (07)

\$24.99

SIZING CHART

These charts show body measurements. Be sure to measure yourself to find the accurate size.

HOW TO MEASURE

For best results, have someone else take measurements. Measure body in swimsuit or underwear. Tape must be snug but not tight. If measurements fall between two sizes, order the larger size.

HEIGHT

Stand with back straight, without shoes; measure from the top of the head to the floor.

CHEST

Measure under your arms, around the fullest part of your chest.

WAIST

Measure around your natural waistline, keeping one finger between the tape and body.

HIPS

Stand with legs together, measure around the fullest part of hips, ensuring the tape is level.



PFDs

MEN'S AIRFLOW

Size	S	M	L	XL	2XL
Chest (in.)	33-36	36-40	40-44	44-50	50-56

LADIES' FREEWAVE & AIRFLOW

Size	S	M	L	XL	2XL
Chest (in.)	30-33	33-36	36-39	39-42	42-45

MEN'S FREEWAVE & MOTION, NEO / NYLON & SANDSEA

Size	S	M	L	XL	2XL	3XL	4XL
Chest (in.)	33-37	37-41	41-45	45-49	49-53	53-57	57-61

LADIES' MOTION

Size	XS	S	M	L	XL
Chest (in.)	28-32	32-36	36-40	40-44	45-49

NAVIGATOR

Size	XS	S/M	L/XL	2XL/3XL
Chest (in.)	28-32	32-40	40-52	50-60

PET PFD

Size	S/M	L/XL
Neck (in.)	12-19	18-22
Chest (in.)	22-32	30-38
Waist (in.)	18-28	26-32

GLOVES

Size	XS	S	M	L	XL
inches	2½	3	3½	3¾	4½

SPORTSWEAR

MEN'S - TOP

Size	S	M	L	XL	2XL	3XL
Chest (in.)	36-38	39-41	42-44	46-48	50-52	54-56
Waist (in.)	30-32	33-35	36-39	41-43	45-48	50-52
Arm length (in.)	33	33	34	34	35	35

LADIES' - TOP

Size	XS	S	M	L	XL	2XL
Chest (in.)	32½-33½	34½-35½	36½-38	39½-41	43-45½	47-49½
Waist (in.)	24½-25½	26½-27½	28½-30	31½-33	35-37	39-41
Arm length (in.)	29	30	31	32	32	32

MEN'S BOARDSHORTS

Size	28	30	32	34	36	38
Waist (in.)	28-30	30-32	32-34	34-36	36-38	38-40
Hips (in.)	33-35	35-37	37-39	39-41	41-43	43-45

LADIES' SKIRT

Size	26	28	30	32	34	36	38
Waist (in.)	25-26	26½-27½	28-29	29½-30¾	31-32¾	32¾-34	34¾-36
Hips (in.)	32-34½	35-36½	37-38½	39-40½	41-42½	43-44½	45-46½

KIDS

Size	2	3-4	5-6	7-8
Height	2'11"	3'2"-3'5"	3'8"-3'11"	4'2"-4'5"
Chest (in.)	21	22-23	24-25	26-27
Waist (in.)	20	20½-21	21½-22	22½-23

WETSUITS & RASHGUARDS

MEN

Size	S	M	L	XL	2XL
Height	5'6"-5'8"	5'8"-5'11"	5'11"-6'2"	6'-6'3"	6'-6'4"
Weight (lb)	130-150	150-175	175-200	195-220	215-235

LADIES

Size	6	8	10	12	14
Height	5'2"-5'4"	5'4"-5'7"	5'6"-5'9"	5'7"-5'10"	5'8"-5'10"
Weight (lb)	110-115	120-130	130-140	140-150	150-160

KIDS

Size	8	10	12	14
Height	4'6"-4'8"	4'8"-4'10"	4'10"-5'	5'-5'3"
Weight (lb)	60	70	80	90

WHAT CODE REPRESENTS YOUR SIZE?

- Find your size
- The corresponding code is **THE CODE** you use to complete the part number on your order.

Example: 440 227_90 Size: M = code "06", therefore 440 227 0690

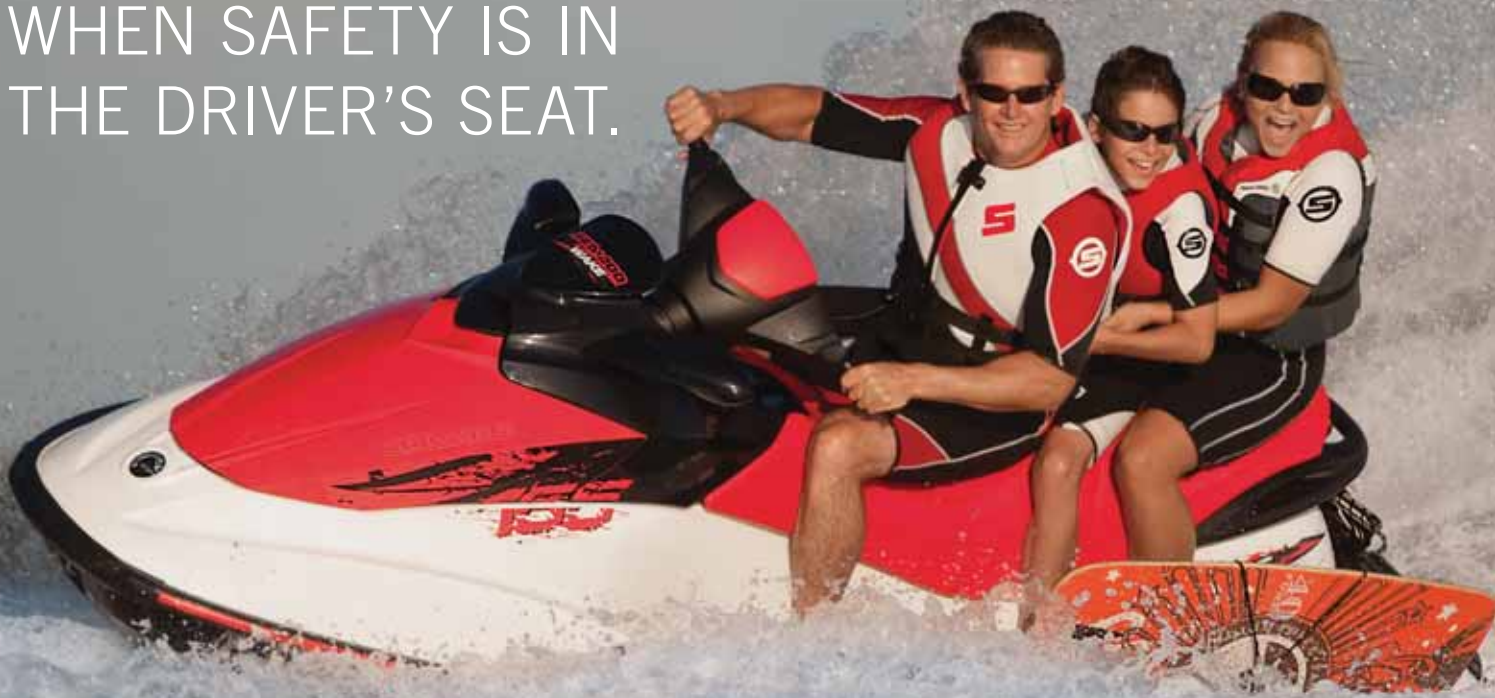
ORDER CHART

Size	ONE SIZE	XS	S	M	L	XL	2XL	3XL	4XL	2XL/3XL	S/M	L/XL
Code	00	02	04	06	09	12	14	16	18	74	72	73

Size	2	3-4	5-6	7-8	6	7	8	9	10	11	12	14	26	28	30	32	34	36	38
Code	21	79	52	54	25	27	28	29	30	31	32	34	89	36	37	38	39	40	41

For metric measurements, please refer to sea-doo.com

THE FUN LASTS LONGER WHEN SAFETY IS IN THE DRIVER'S SEAT.



When riding a Sea-Doo PWC, prudent riders captain their fun by leading the way and being safety smart!

When you're the driver of a personal watercraft, you need to take the safety of your passengers personally.

As the "captain," you are not only responsible for adhering to the safety rules respecting personal watercraft use, but also for ensuring your passengers are wearing the appropriate protective equipment and riding gear.

First of all, you and your passengers are required to wear an approved personal flotation device (PFD) certified for use with a personal watercraft.

Also, a wetsuit and / or neoprene bottoms will provide adequate protection to the lower part of the body. You can suffer severe internal injuries if water is forced into a lower body cavity as a result of falling in the water or being near the jet thrust nozzle. Remember that normal swimwear cannot appropriately protect against forceful water entry.

Finally, extra protective equipment such as footwear, gloves and goggles is also recommended. The fun lasts longer when safety is in the driver's seat.

You can find all of these items at an authorized Sea-Doo dealer.





PWC

A C C E S S O R I E S



THE NEW SEA-DOO ADVANCED TEC PWC TRAILERS SURPASS THE COMPETITION WITH NEVER-SEEN-BEFORE INDUSTRY FIRSTS



iCatch and release system is an entirely new concept eliminating the traditional winch and tackle process. It simplifies the launch and load procedure by grasping the bow eye of the PWC, securely locking it into position automatically. Works in conjunction with walk pad guidance system.

Patent pending

Walk pad guidance system allows you to conveniently walk around to access your PWC. Doubles as a guidance system for a trouble free mooring process. Launch and load in seconds.

Premium **roller bunk system** allowing for smooth and resistance free PWC manipulation when launching and loading.



Shown with optional accessories



ADVANCED TEC™ iCATCH™ I

So over and above the competition, it clearly pays to have the best.

- Innovative walk pad-guidance system allows you to conveniently walk around to access your PWC
- Easier to get off watercraft, in and out of water
- Improved visibility of trailer when underwater
- Doubles as an alignment guide
- Automatic iCatch and release system using a quick-snap handle built into the walk pad eases manipulation and process of loading and unloading watercraft
- Enables riders to spend less time on the ramp and more time riding
- Roller bunk system also simplifies unloading and loading
- Adjustable bunk system and catcher adapt to different types of Sea-Doo watercraft, and help properly position watercraft to improve handling while towing
- Custom frame design requires less water to load and unload watercraft
- Galvanized frame and rims for extended life in all weather conditions
- Torsion suspension system provides low ride height and better handling

\$1,699.99

SPECIFICATIONS	
Overall length	4.1 m
Overall width	1.8 m
Width between walk pad ¹	1.3 m
Overall height (walk pad) ²	81 cm
Overall height (iCatch) ³	99 cm
Coupler	5 cm
Approx. weight	163 kg
Carrying capacity	544 kg

ADVANCED TEC I

The workhorse trailer for the smallest to biggest PWCs.

- Standard with premium torsion suspension for smoother ride
- Innovative low-slung-designed frame eases loading
- Fully adjustable carpeted bunks (side-to-side/front-to-back) allows you to change bunk angles to fit all PWCs
- Adjustable winch post with non-marring bow rollers
- Sealed maintenance-free wheel bearings for added peace of mind
- Galvanized frame and rims for extended life in all weather conditions

\$974.99

SPECIFICATIONS	
Overall length	4.1 m
Overall width	1.8 m
Width between fenders ¹	1.4 m
Overall height (fender) ²	58 cm
Overall height (winch) ³	79 cm
Coupler	5 cm
Approx. weight	118 kg
Carrying capacity	590 kg

¹ Maximum PWC width ² Coupler on ground ³ Coupler on hitch at 41 cm above the ground



KEY FEATURES INCLUDED

	ADVANCED TEC iCATCH I	ADVANCED TEC I
Adjustable iCatch system	•	
Rugged and durable hot-dipped galvanized finish	•	•
8 adjustable rollers (4" left to right, 8-degree angle)	•	
Non-marking rollers	•	
Blow molded walk pad	•	
2 adjustable wooden bunks with carpet (4" left to right, 8-degree angle)		•
Adjustable winch strap		•
Multi adjustable axle	•	•
Torsion rubber suspension	•	•
Tire size: 4.80 x 12	•	•
Bolt pattern: 5 bolts on 4 1/2" diameter	•	•
Ground wired	•	•
Fully enclosed wiring harness	•	•
Submersible lights	•	•
Coupler stand	•	•
Suspended plastic fender for better splash protection	•	•
Safety cable	•	•
No-maintenance sealed bearing	•	•
WARRANTY	1/5 year*	1/5 year*
REQUIRED OPTION		
iCatch bow cup (295 100 403)	•	
	\$48.99	

*One year complete warranty and 5 years on frame and axle.





OPTIONAL ACCESSORIES



ALLOY MAG WHEELS

Lightweight alloy mag wheel upgrade with tires. Sold in pairs with chrome center cap and nuts.

295 100 401

\$489.99



SPARE WHEEL ASSEMBLY

12" (30 cm) galvanized steel spare wheel and tire.

271 001 676

\$109.99



SPARE TIRE SUPPORT

Galvanized steel spare wheel support.

295 100 400

\$79.99



WALK PAD CARPET KIT

Fits only the Advanced TEC iCatch I trailer. Complete walk pad carpet kit improves footing and design of Advanced TEC iCatch I PWC trailer by adding traction mats. Mats include 4 3M self-adhesive carpets for fast, clean installation.

295 100 398

\$144.99



MARINE JACK AND STAND

1200 lb (544 kg) heavy-duty swivel mount caster jack. Corrosion resistant zinc plated finish. Provides 12" (30 cm) of screw travel and up to 27" (69 cm) of lift.

295 100 399

\$84.99

WATERCRAFT COVERS

Complete and versatile color-matching lineup of watercraft covers. Solution-dyed fabric offers easy manipulation and increased UV resistance. Strapless design provides easy installation. Patented air release vent system for trailering.



GTX & RXT iS COVER

Convenient openings for easy access to the Speed Tie mooring system.

280 000 460 - FITS 2010 GTX iS, GTX LTD iS & RXT iS MODELS - BLACK / LIGHT GREY

\$269.99

GTX & RXT COVER

Convenient openings for easy access to the Speed Tie mooring system.

280 000 472 - FITS 2010 RXT-X, GTX & RXT MODELS WITHOUT iS - BLACK / LIGHT GREY

\$269.99



GTI™ & GTI SE COVER

280 000 462 - FITS 2010 GTI & GTI SE MODELS - BLACK / LIGHT GREY

\$254.99



WAKE™ PRO COVER

Convenient openings for easy access to the Speed Tie mooring system.

280 000 461 - FITS 2010 WAKE PRO MODELS - BLACK / VIPER RED

\$269.99



RXP™ COVER

280 000 391 - FITS 2008-2010 RXP & RXP-X MODELS - BLACK

\$254.99



WAKE 155 COVER

280 000 438 - FITS 2009-2010 WAKE 155 MODELS - MORTAR GREY / BLACK

\$254.99

Note: For prior model years, please ask your dealer for details.



WATERCRAFT LADDER

Retractable boarding step designed specifically for your watercraft. Spring-loaded to stay in the up position.

295 500 593 – GTS, GTI, GTX 2005 AND PRIOR (2-STROKE EXCEPT GTX DI 2002) – *(Not illustrated)*

295 100 345 – GTI 2006 & UP, RXP, RXP-X, RXT-X EXCEPT 2010

295 100 362 – 2010 RXT-X

\$274.99

295 500 693 – GS, GSI, GSX (RFI, DI, LTD), RX (DI) – *(Not illustrated)*

\$294.99



BILGE PUMP KIT

Keeps engine compartment dry. Includes 460 gph bilge pump, stainless steel mounting bracket, bilge fitting, hose and hardware necessary for installation.

295 100 359 – MODELS WITH IS, 2010 GTX, RXT, RXT-X, WAKE PRO

\$149.99



SKI EYE

Add to your existing U-ring to tow water-skiers more easily. Also ideal for tube towing.

291 002 351 – GTX, GTS, GTI, RXT

\$21.99

GLOVE BOX ORGANIZER

Kit includes glove box liner and semi-rigid splash resistant, portable case. The liner cushions the inside of the glove box to provide insulation. The case fits perfectly in the glove box and is easy to access when opening the glove box cover. This semi-rigid case is perfect for carrying and storing valuables, e.g. keys, cellphone, wallet, sunglasses.

295 100 327 – MODELS WITH IS, 2010 GTX, RXT, RXT-X, WAKE PRO

\$144.99



STORAGE TRAY

Front storage tray is complete with molded compartments for convenient storage of your watercraft safety kit, cooler and watertight foam insulated otter box. Great for wallets, glasses and cell phones. Netting provides secure storage for towels, clothing and sandals. Comes with a practical integrated carry handle.

269 501 478 – GTX, RXT 2009 AND PRIOR, EXCEPT MODELS WITH IS

\$73.99



LIFT KITS

Accurately lift and position your watercraft with a lift kit of nylon webbing and vinyl-coated steel lift plates.

295 100 206 – LIFTING CAPACITY OF 850 LBS (386 KG) / 3D PLATFORM ONLY

\$329.99

295 100 205 – LIFTING CAPACITY OF 1100 LBS (500 KG) / ALL 4-TEC ENGINE PLATFORMS EXCEPT IS & 2010 GTX, RXT, RXT-X, WAKE PRO

529 036 180 – LIFTING CAPACITY OF 1200 LBS (544 KG) / ALL 4-TEC ENGINE PLATFORMS

\$449.99

RETRACTABLE SKI PYLON

Bestselling, waterfun retractable high-rise ski pylon with built-in spotter grab rails.

295 100 304 – GTI 2006 AND UP – *(Not illustrated)*

\$354.99

295 100 321 – RXT-X 2009 AND PRIOR

295 100 366 – 2010 GTX, RXT, RXT-X, EXCEPT MODELS WITH iS

\$404.99

295 100 251 – GTX & RXT 2009 AND PRIOR, EXCEPT MODELS WITH iS

\$409.99



WAKEBOOST SYSTEM™

Fine-tune your wake by adding up to 200 lbs (91 kg) of additional weight to the rear swim platform. System includes: large, non-skid surface with integral board support and footrests, room for two racks as an option, quick tank fill (in just over 2 minutes) and quick connect feature for easy tank removal when not in use. Help protect the marine environment by completely emptying your WakeBoost System before moving from one body of water to another.

295 100 322 – GTX, RXT 2006-2009, EXCEPT MODELS WITH iS

295 100 356 – GTX, RXT 2002-2005

295 100 335 – RXT-X

\$619.99



PWC FENDER BUMPER

Inflatable, molded marine-strength 3" x 13" (7.6 cm x 33 cm) vinyl fender. One per package. Fits best all PWCs 2001 and prior.

295 100 109 – WHITE

295 100 110 – YELLOW

295 100 111 – BRIGHT RED

\$36.99



WAKEBOARD RACK

Specially designed to fit Sea-Doo PWCs. Each rack holds one wakeboard and offers safe and easy board storage. Sold individually.

295 100 390 – MODELS WITH iS, 2010 GTX, RXT, RXT-X, WAKE PRO

295 501 037 – GTI 2006 AND UP – *(Not illustrated)*

295 500 985 – GTX & RXT 2009 AND PRIOR, EXCEPT MODELS WITH iS, GTI 2005 AND PRIOR – (NOT ILLUSTRATED)

\$199.99



SANDBAG ANCHOR

600 denier polyester bag with up to 35 lbs (16 kg) sand / rock capacity. 21' (6.4 m) polypropylene cord. Measures 12½" x 9" (31.8 cm x 22.9 cm). Stores easily and floats when empty.

■ 295 100 212 - BLUE ■ 295 100 211 - YELLOW
■ 295 500 589 - RED ■ 295 100 286 - SAND

\$49.99



SHOCK TUBE

Protects passengers from ski rope kick-back and keeps ski ropes away from impellers. Durable nylon cover over closed cell foam.

■ 295 500 597 - RED ■ 295 100 210 - BLUE
■ 295 100 209 - YELLOW ■ 295 100 287 - SAND

\$30.99



TUBE TOW ROPE

295 100 207 - ALL SPORT BOATS AND 3-SEATER WATERCRAFT

\$49.99



DOCK TIE

Moor your boat with these 4' (1.2 m) long, floating Sea-Doo bungee-type ties. One per package.

■ 295 100 047 - YELLOW

\$34.99



FENDER

Polyform strength and dependability with a vinyl valve system for quick, flexible adjustment of firmness. One per package; includes fender tie.

295 500 511

\$29.99



SEA-DOO SPEED TIE

First and only fully integrated PWC mooring system. Convenient snap out plates and adapted covers allow for easy installation and positioning of the Speed Tie system at the front and rear of the watercraft. Provides quick and secure docking. Stores 8' (2.4 m) of rope and locks to desired length. Sold in pairs.

296 000 249 – MODELS WITH IS (top picture)

\$239.99

295 100 365 – 2010 GTX & RXT WITHOUT IS, RXT-X, WAKE PRO (left picture)

\$254.99



SEA-DOO SPEED TIE FOR DOCK

Same exclusive mooring system available as an accessory on the new PWC, adapted for dock mounting. Bolts directly to dock. Provides quick and secure mooring for all PWCs, eliminating excessive rope on the dock. Stores 8' (2.4 m) of rope and locks to desired length. Sold individually.

295 100 336

\$144.49

MOORING LINE

Solid UV-protected, highly visible polypropylene buoyant rope.

295 100 060 – 15' (4.6 m) – YELLOW

295 100 235 – 15' (4.6 m) – RED

295 100 236 – 15' (4.6 m) – BLUE

295 100 239 – 15' (4.6 m) – BLACK

295 100 240 – 15' (4.6 m) – WHITE

295 100 241 – 15' (4.6 m) – HUNTER GREEN

\$34.99

295 100 231 – 20' (6.1 m) – BLUE

295 100 233 – 20' (6.1 m) – WHITE

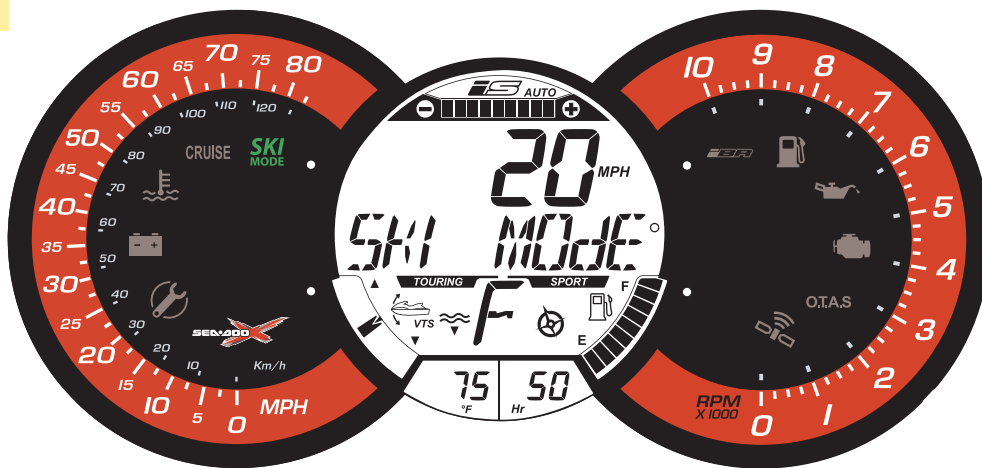
\$36.99

295 100 232 – 25' (7.6 m) – WHITE

295 100 234 – 25' (7.6 m) – BLUE

\$44.99





SKI MODULE

Activates ski mode. Choice of different preset acceleration curves for perfect launch everytime when towing a skier or wakeboarder. User-friendly interface on gauge. Plugs in diagnostics connector. Includes hardware necessary for installation.

295 100 380 – 2010 GTX, RXT, RXT-X INCLUDING MODELS WITH iS

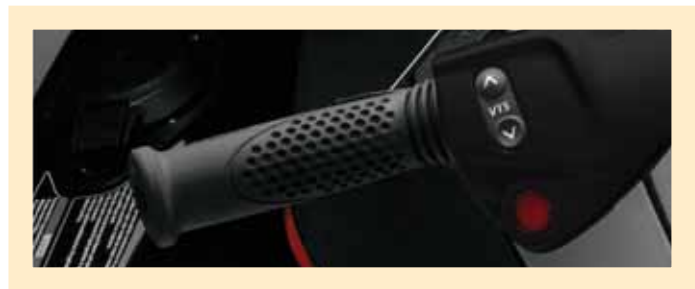
\$159.99

X PACKAGE MODULE

Activates X Package functions on gauge: lap timer, fuel autonomy (time and distance to "empty"), average and top speed and RPM display and engine temperature. User-friendly interface on gauge. Plugs in diagnostics connector. Includes hardware necessary for installation.

295 100 381 – 2010 GTX, RXT, WAKE PRO INCLUDING MODELS WITH iS

\$159.99



VARIABLE TRIM SYSTEM MODULE

Activates and provides instantaneous VTS adjustment. Simple switch mounted on handlebar allows fine tuning of watercraft trim angle while riding. Plugs in diagnostics connector. Includes switch, cap and hardware necessary for installation.

295 100 379 – 2010 RXT 215, GTX 155

\$194.99

CRUISE CONTROL AND SKI MODULE

Activates ski mode, cruise control and slow speed mode on RXT-X 2010 through a simple switch mounted on the handlebar. User-friendly interface on gauge. Plugs in diagnostics connector. Includes switch, cap and hardware necessary for installation.

295 100 383 – 2010 RXT-X

\$244.99



DEPTH FINDER

295 100 332 – iS MODELS, 2010 GTX, RXT, RXT-X, WAKE PRO
295 100 324 – ALL GTX & RXT MODELS WITH 4-TEC ENGINES 2009 AND PRIOR, EXCEPT 2002 AND MODELS WITH iS, ALL GTI 2008 AND UP

\$409.99

SPEED AND WATER TEMPERATURE SENSOR

(Not illustrated)

Integrated boat speed and water temperature sensor. Ready to plug into vehicle wiring harness. Installation hardware included.

295 100 309 – GTI 2006 AND UP

\$99.99

GARMIN⁺ 76 GPS HOLDER / GLOVE COMPARTMENT

This glove compartment with a recessed space in the door is specially designed to house a Garmin 76 GPS unit. Just clip it in for safe storage and handy retrieval.

295 100 283 – GTX AND RXT 2009 AND PRIOR, EXCEPT MODELS WITH iS – BLACK

\$64.99

LEARNING KEY[™] LANYARD

Control the speed of your PWC. A must for less experienced riders.

278 002 392 – iS PLATFORM & 2010 GTX, RXT, RXT-X & WAKE PRO
278 002 203 – DI & 4-TEC MODELS EXCEPT MODELS WITH iS AND 2010 RXT, RXT-X & WAKE PRO *(Not illustrated)*

\$68.49



10 LITER

40 LITER

SEA-DOO DRY BAGS

10 liter watertight bag. Improved watertightness. Puncture resistant PVC coated polyester fiber material. Reinforced bottom.

269 501 744 – BLACK

\$34.99

40 liter watertight bag. Same great features as 10 liter bag, with shoulder strap added.

269 501 750 – BLACK

\$44.99



MIRRORS

295 501 003 – GTI 2005 AND PRIOR – LH – BLACK

295 501 004 – GTI 2005 AND PRIOR – RH – BLACK

\$79.99

295 100 308 – GTI 2006 AND UP – BLACK

– SET OF 2 WITH INSTALLATION HARDWARE

\$119.99

HANDLEGRIPS

Dual density rubber. Better comfort and control. Six bright colors. Fits all 2000 and up watercraft, except models with IS and 2010 GTX, RXT, RXT-X & WAKE PRO.

\$21.99



295 500 976 – BLUE / BLACK



295 500 979 – RED / BLACK



295 500 977 – EARTH GREY / BLACK



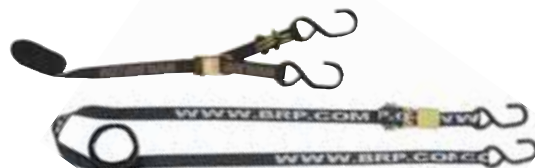
295 500 980 – PEWTER GREY / BLACK



295 500 978 – GREEN / BLACK



295 500 981 – YELLOW / BLACK



DELUXE TIE DOWN BUCKLE

Heavy-duty strength polyester, fingertip tension with ratchet or cam buckle release. Embroidered 1" (25 mm) nylon strap adjusts from 1' to 5' (0.3 m to 1.5 m). One per pack.

295 100 185 – CAM BUCKLE,
2 J-HOOK STYLE

\$20.99

295 100 183 – RATCHET BUCKLE,
2 J-HOOK STYLE

\$20.99

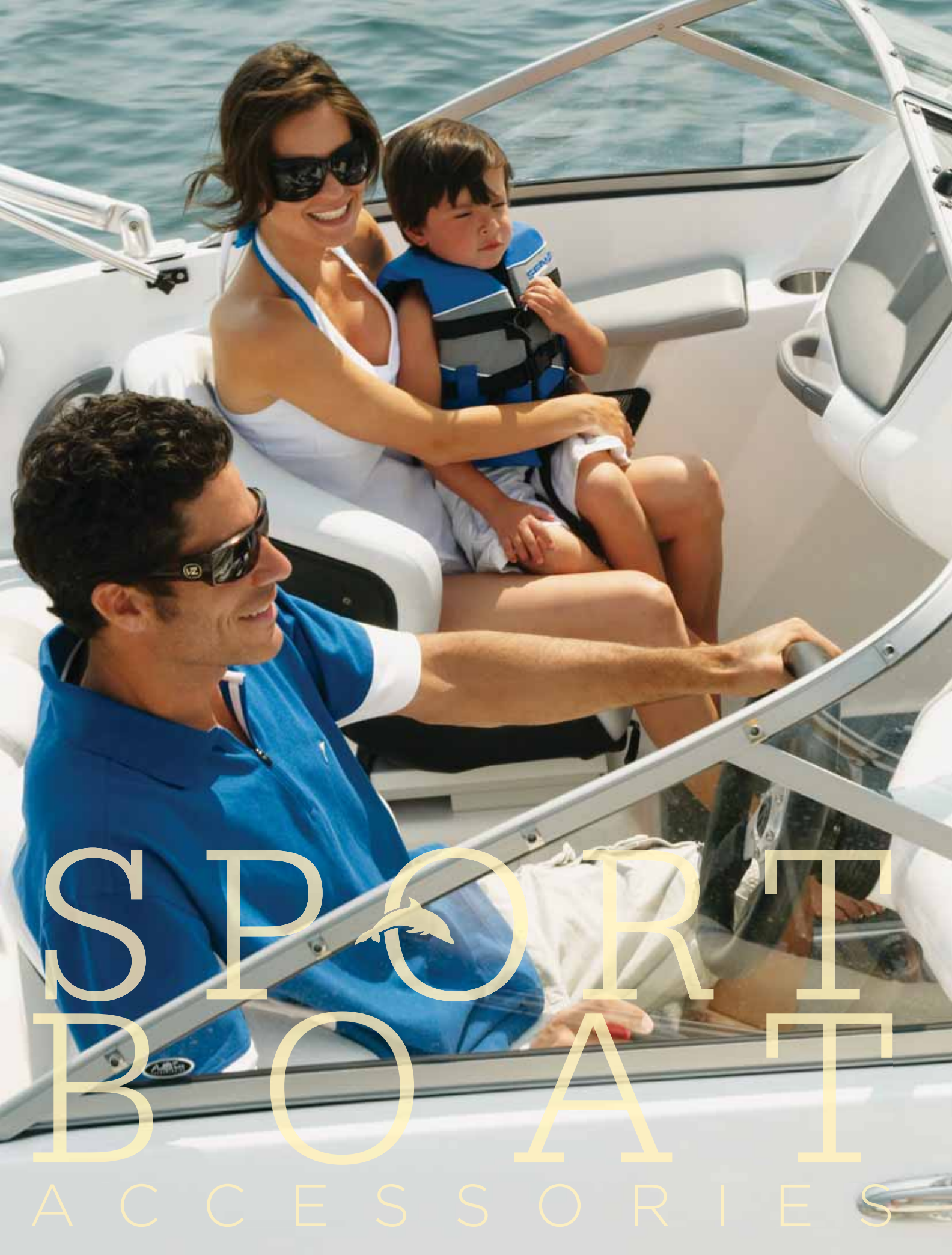


TRAILER REAR TIE DOWN BRACE STRAP

Secure your boat and PWC while trailering. Straps fit all Sport Boats up to 18' (5½ m). Pack of 2.

295 100 184

\$24.49



SPORT
BOAT
ACCESSORIES

SPORT BOAT COVERS

Complete lineup of covers for every model year. Manufactured with the best solution-dyed fabric and built-in features. Equipped with adjustable anti-pooling pole and side release cinch strap system.



SPORT BOAT COVERS

280 000 465 – 150 SPEEDSTER 2010 – BLACK

\$599.99

280 000 468 – 180 CHALLENGER 2010 – MORTAR GREY

\$634.99

280 000 469 – 210 CHALLENGER / 210 CHALLENGER SE 2010 – MORTAR GREY

280 000 470 – 210 WAKE 2010 – VIPER RED

\$769.99

280 000 466 – 230 CHALLENGER / 230 CHALLENGER SE 2010 – MORTAR GREY

280 000 467 – 230 CHALLENGER SP / 230 WAKE 2010 – VIPER RED

280 000 176 – ISLANDIA® 2006 AND UP WITHOUT TOWER – SEASHORE

280 000 294 – 200 SPEEDSTER – LIGHT GREY

\$839.99



DEPTH FINDER

295 100 317 – 150 SPEEDSTER 2007 AND UP,
180 CHALLENGER 2007 AND UP

\$409.99



WAKEBOARD RACK

Installs directly on tower tubing. 2 mount sizes available: 60 mm and 48 mm diameter. Includes hardware necessary for installation.

204 950 147 – 60 mm DIAMETER – FITS 2010 150 & 200 SPEEDSTER,
210 & 230 CHALLENGER, 2009 200 SPEEDSTER
204 072 339 – 48 mm DIAMETER – FITS 2010 180 CHALLENGER, ALL BOATS UP TO 2009
EXCEPT 200 SPEEDSTER 2009

\$603.99



SKI MIRROR KIT

295 100 386 – FITS ALL BOATS WITH TOWERS,
EXCEPT 180 CHALLENGER

\$89.99



BIMINI TOPS

Designed specifically for Sea-Doo Sport Boats, these stylish tops add to the appearance of your boat while protecting you from the elements. All tops are constructed with fade-resistant Sunbrella® brand fabric on an anodized aluminum frame. Includes all mounting hardware.

295 500 950 – SPORTSTER 4-TEC, 150 SPEEDSTER – YELLOW

295 100 313 – 150 SPEEDSTER – RED

\$699.99

295 501 001 – CHALLENGER 180 2005-2006 – CHARCOAL GREY

295 500 967 – 200 SPEEDSTER – MEDITERRANEAN BLUE

295 500 959 – 200 SPEEDSTER – RED

295 501 095 – 200 SPEEDSTER WITH TOWER – RED

295 501 096 – 200 SPEEDSTER WITH TOWER – MEDITERRANEAN BLUE

295 501 040 – SPEEDSTER WAKE WITH TOWER AND SPEAKERS – RED

295 501 041 – SPEEDSTER WAKE WITH TOWER AND SPEAKERS – MEDITERRANEAN BLUE

295 501 039 – CHALLENGER 180 CS 2006, 180 CHALLENGER 2007 AND UP – CHARCOAL GREY

\$824.99



REPLACEMENT ANTI-POOLING KIT

Prevents water from accumulating on cover during storage.

296 000 184 – 185 UTOPIA, 205 UTOPIA

296 000 178 – SPORTSTER 4-TEC, 150 SPEEDSTER

296 000 182 – CHALLENGER 1800

296 000 186 – ISLANDIA 2007 WITHOUT TOWER

296 000 185 – 200 SPEEDSTER

295 100 318 – 230 CHALLENGER

296 000 231 – 180 CHALLENGER, CHALLENGER CS, CHALLENGER SE

296 000 232 – ISLANDIA 2006 WITH TOWER

\$104.99



BOW LADDER KIT

3-step telescopic ladder. Can be folded and stored in bow. Includes hardware necessary for installation.

295 100 387 – FITS 210 CHALLENGER

\$244.99

Fade-resistant fabric bow and cockpit covers provide added protection to your Sport Boat's interior while mooring. Use a bow cover in conjunction with a cockpit cover for additional front storage. Standard with stainless steel snaps for quick installation and removal. Anti-Pooling Kit included.



BOW COVERS

280 000 273 – CHALLENGER 180 CS 2006, 180 CHALLENGER 2007 AND UP – MORTAR GREY

295 501 046 – 205 UTOPIA 2006 AND UP – CHARCOAL GREY
\$229.99

280 000 412 – 230 CHALLENGER 2008 – CADET GREY
\$259.99

280 000 378 – 230 CHALLENGER 2007 – BRASS
280 000 379 – 230 WAKE 2007 – RED
280 000 414 – 230 WAKE 2008 – RED
269 800 024 – 210 CHALLENGER – TAUPE
269 800 033 – 210 CHALLENGER – CHARCOAL GREY
\$279.99

COCKPIT COVERS

280 000 272 – CHALLENGER 180 CS 2006, 180 CHALLENGER 2007 WITHOUT TOWER (WITH "TAYLOR MADE" TAG IN WINDSHIELD) – MORTAR GREY
280 000 380 – 180 CHALLENGER 2007 AND UP – MORTAR GREY

\$449.99

280 000 411 – 230 CHALLENGER 2008 – CADET GREY
280 000 376 – 230 CHALLENGER 2007 – BRASS
280 000 413 – 230 WAKE 2008 – RED
280 000 377 – 230 WAKE 2007 – RED
280 000 274 – 205 UTOPIA 2006 AND UP – CHARCOAL GREY
269 800 025 – 210 CHALLENGER WITHOUT TOWER – TAUPE
269 800 034 – 210 CHALLENGER WITHOUT TOWER – CHARCOAL GREY
269 800 036 – 210 CHALLENGER WITH TOWER – TAUPE
269 800 035 – 210 CHALLENGER WITH TOWER – CHARCOAL GREY
\$609.99



SNAP-IN CARPETS

Complement your boat's interior with premium-grade custom-designed polyester, UV-stabilized marine carpet. Perfect for exterior use, this exceptional carpeting is made to withstand high traffic and retain lasting beauty. Resists mold, mildew, stains and fading.

295 100 271 – SPORTSTER 4-TEC, 150 SPEEDSTER – MEDIUM GREY
295 100 281 – 200 SPEEDSTER – ROYAL BLUE
295 100 278 – 200 SPEEDSTER – RED
295 100 290 – 200 SPEEDSTER – DOLPHIN GREY

\$514.99

295 100 316 – 230 CHALLENGER – MICA MIST
295 501 002 – 180 CHALLENGER – MEDIUM GREY
295 100 273 – CHALLENGER X – MEDIUM GREY
295 100 270 – UTOPIA 205 2005 AND PRIOR – SMOKEY GREY
204 072 321 – 205 UTOPIA 2006 AND UP – SMOKEY GREY
295 100 388 – 210 CHALLENGER – MARBLE GREY

\$649.99



OTTER BOX

Compact, crush-proof, watertight box is ideal for carrying and storing important items.

295 100 199 – 2000 SERIES
EXTERIOR DIMENSIONS (W, L, H):
6½" X 1½" X 3⅞"
(16½ cm X 4 cm X 10 cm)

295 100 198 – 2500 SERIES
EXTERIOR DIMENSIONS (W, L, H):
6½" X 3⅞" X 3⅞"
(16½ cm X 8½ cm X 10 cm)

295 100 196 – 9000 SERIES
EXTERIOR DIMENSIONS (W, L, H):
3" X 7½" X 3¾"
(8 cm X 19 cm X 9½ cm)

\$39.99

295 100 197 – 3500 SERIES
EXTERIOR DIMENSIONS (W, L, H):
8⅜" X 4" X 4⅜"
(21 cm X 10 cm X 11 cm)

\$44.99



BOAT ANCHOR

Use this anchor with only a rope – a chain is not necessary. With its superior grip, this 18 lbs (8 kg) anchor will hold all boats up to 23' length.

295 100 289 – BLACK

\$104.99



BOAT ANCHOR PACKAGE

Rubber coated anchor for corrosion resistance. Folds flat for storage convenience. This 11 lb (5 kg) anchor will hold boats up to 23' (7 m).

295 100 343

\$99.99



WHISTLE

This "pea-less" whistle produces an extremely loud, high, penetrating trill that can be heard over long distances. Unaffected by water, just clear with one quick blow.

295 500 554 – YELLOW

\$9.49



SEA-DOO LICENSE PLATE

484 800 269

\$14.99



COUNTER STOOL

Stool with classic chrome legs featuring our BRP logo. A great addition to your cottage, rec-room or shop.

415 129 015

\$144.99

RAM⁺ 18 SPOTLIGHT

The RAM Spotlight has a powerful 70,000-candle power bulb, and indestructible rubber housing. Patented RAM rubber ball and socket mount allows the light to be easily aimed or even removed for handheld use. Simply plug into 12-volt outlet.

715 000 007

\$94.99



RAM CELL PHONE HOLDER

Keep your phone handy while touring the lakes. The unique mounting system design provides easy installation, mobility, strength and versatility.

715 000 122

\$109.99



RAM CUP HOLDER

Mounts to console.

715 000 121

\$92.49



RAM E-TREX GPS HOLDER

Ensure your way home from all your rides. This mount holds Garmin E-Trex electronics steady under high-vibration conditions.

715 000 120

\$109.99



WATERCRAFT SAFETY EQUIPMENT KIT

Includes all watercraft safety essentials. 50' (15 m) of buoyant heaving line with float, bailer, whistle and watertight flashlight.

295 100 330

\$24.99



FENDER

Polyform strength and dependability with a vinyl valve system for quick, flexible adjustment of firmness. One per package; includes fender ties.

295 500 652 – 14' TO 16' SPORT BOATS

\$39.99

295 500 653 – 18' TO 21' SPORT BOATS

\$44.99



THROW LINE BAG

Floating storage bag and 50' (15 m) of buoyant yellow rope. Throw line bags provide added safety.

295 500 832

\$32.99



DRILL PUMP

Safely and easily removes engine oil.

295 100 244 – ALL 4-TEC ENGINES

\$26.49





COUPLER HOSE

For most watercraft and Sport Boat models that already have a "T" fitting. Also for watercraft and Sport Boat models that use the Flush Adapter on the ride shoe water outlet.

295 500 258

\$24.99



FLUSH KIT

A must to help keep your engine clean. For use on older watercraft that do not yet have a "T" fitting and don't have the threaded water outlet on the ride shoe.

295 500 068

\$24.99



FLUSH ADAPTER

For most watercraft and Sport Boat models with a threaded water outlet fitting on the ride shoe.

295 500 473

\$6.99



YUASA⁺ BATTERIES

Dependable power when you need it. Fits all Sea-Doo personal watercraft.

278 001 756 – YUASA BATTERY 19 AMP. DRY (YB16CL-B)

\$94.99

410 301 201 – YUASA BATTERY 20 AMP. DRY (Y50-N18L-A)

\$100.99

410 301 203 – YUASA BATTERY 18 AMP. WET (YTX20L-BS)

\$130.99

710 000 283 – YUASA BATTERY 15 AMP. WET (YTX15L-BS)

\$131.99

278 001 882 – YUASA BATTERY 30 AMP. DRY (YB30CL-B)

\$158.49



IMPELLERS

	<i>Outside Diameter</i>	<i>Pitch Angle</i>
267 000 115	6.11" (155.3 mm)	10-21
267 000 285	6.26" (159 mm)	10-21
271 000 920	6.1" (155 mm)	15-21
267 000 283	6.26" (159 mm)	10-21
267 000 119	6.12" (155.5 mm)	10-21
267 000 336	6.1" (155 mm)	10-21
267 000 211	6.1" (155 mm)	10-21
267 000 350	6.26" (159 mm)	10-21

\$338.49



FIRE EXTINGUISHER

A requirement for every boat. Ideal for grease, oil, and electrical fires. US Coast Guard approved.

295 100 056 – USA – WHITE

295 100 004 – USA – RED

295 100 005 – CANADA – RED

\$29.99



XPS 2-STROKE MINERAL OIL

Formulated and developed to work specifically in a Sea-Doo watercraft equipped with Rotax carbureted 2-stroke engines.

293 600 117 – 1 QUART / 946 ml

293 600 118 – 1 US GALLON / 3.785 L



XPS 2-STROKE SYNTHETIC OIL

A uniquely formulated low-ash 2-stroke fully synthetic injection oil. It meets the specific lubrication requirements of Sea-Doo watercraft equipped with Rotax carbureted, RFI or DI 2-stroke engines.

293 600 045 – 1 QUART / 946 ml

293 600 046 – 1 US GALLON / 3.785 L



XPS 4-STROKE SYNTHETIC BLEND OIL – SUMMER GRADE

Synthetic blend 4-stroke engine oil for the Rotax 4-TEC engine.

XPS Summer Grade synthetic blend watercraft engine oil is a high performance 4-stroke engine oil developed for riders that demand maximum engine performance and protection during all operating conditions.

293 600 121 – 1 QUART / 946 ml

293 600 122 – 1 US GALLON / 3.785 L



XPS 2-STROKE SYNTHETIC BLEND OIL

This 2-stroke synthetic blend new formulation was developed specifically for Sea-Doo watercraft with Rotax RFI and carbureted 2 strokes engines to deliver the ultimate performance. It extends engine life and reduces smoke emissions and combustion deposits compared to conventional oils.

293 600 100 – 1 QUART / 946 ml

293 600 101 – 1 US GALLON / 3.785 L



MAINTENANCE AND OIL CHANGE KIT

For all 4-stroke Sea-Doo engines. Kit includes: 1 gallon of XPS synthetic blend oil, oil filter, 3 NGK® spark plugs and instruction sheet.

295 501 075



XPS PWC, ROADSTER & SNOWMOBILE QUICK FIX CLEANING AND DETAILING KIT

Kit includes: Spray Cleaner & Polish, 2 Microfiber towels.

219 701 714

\$21.99



XPS BOAT & PWC CLEANING AND DETAILING KIT

Kit includes: All purpose Cleaner, Boat & PWC Wash & Wax, Vinyl Cleaner, Spray Cleaner & Polish, 2 Microfiber towels, Deluxe Wash Sponge.

219 701 715

\$64.99

NOTE: Please contact your nearest dealer for suggested retail prices of oil base products.





XPS SPRAY CLEANER & POLISH

Removes road grime, dirt, grease and bugs from land vehicles as well as scum lines and water marks from watercraft. Spray on then buff out, without water. When used as directed, it leaves a showroom shine that protects against sun damage, ozone damage and dirt accumulation. Works great on painted surfaces, fiberglass, chrome and plastics found on your watercraft, motorcycles, automobiles and more.

219 701 706 – 14 oz. (397 g)

\$11.99



XPS BOAT & PWC WASH & WAX

A green, high-grade wash'n'wax concentrate for use on any land vehicle or watercraft. Its high-sudsing action cleans and rinses without streaking or spotting. pH neutral, it contains no harsh builders or phosphates. Does not affect any known finish and leaves a bright, clear shine after rinsing. When used as directed, XPS Wash & Wax is biodegradable and non-toxic.

219 701 711 – 32 oz. (946 ml)

\$11.99



XPS ALL PURPOSE CLEANER

A green cleaner for plastics, fiberglass, metals, rubber, carpets and fabrics. Uses a surfactant-based formula to penetrate through dirt and grease to remove them from your finish. Simply spray on and rinse off. When used as directed, XPS All Purpose Cleaner is biodegradable and non-toxic.

219 701 709 – 32 oz. (946 ml)

\$9.99



XPS MICROFIBER TOWELS

Made up of extremely fine fibres, their soft surfaces have been perfected for drying and polishing boats, motorcycles, cars or any shiny finish. XPS Microfiber Towels are so absorbent they hold up to seven times their weight in water. Machine washable means they can be used over and over again.

219 701 759 – PACK OF 2

\$9.99



XPS VINYL CLEANER

Restores and protects vinyl, rubber, plastics and leather. Its two-in-one formula leaves a transparent and water-repellent gloss coating that will beautify and recondition your vehicle's finish. Protects against UV rays that may otherwise dry and crack surfaces. Contains no silicone.

219 701 710 – 32 oz. (946 ml)

\$14.99



XPS SYNTHETIC GREASE

Recommended for high-rev marine applications. This synthetic grease provides the best wear protection and water-resistance available.

293 550 010 – 14 oz. (400 g)

\$22.99



XPS STORAGE OIL

Use this special oil when putting your Sea-Doo watercraft "to bed" in the fall. Protects all internal engine components against rust due to temperature changes and humidity.

413 711 600 – 12 oz. (350 g) – CA ONLY

413 711 900 – 12 oz. (350 g) – US ONLY

\$11.49



XPS LUBE

A multipurpose lubricant that protects against rust and disperses water. Good all-year-round. Comes in a spray can that works even when turned upside down.

293 600 016 – 14 oz. (400 g)

\$12.99



FUEL STABILIZER

Fuel additive to protect against fuel contamination and residue build-up in carburetors. Should always be used before storing your watercraft for any long period of time.

413 408 600 – 8 oz. (240 ml)

\$10.99



SYNTHETIC JET PUMP OIL

Helps maintain the life of your Sea-Doo watercraft jet pump.

293 600 011

\$18.49



OIL FILTER

Insist on an original only when servicing your vehicle. See your dealer for details.



REGISTRATION KIT

Improved, high-quality registration number kit made of UV resistant vinyl for longevity. An excellent match for your new boat or watercraft. 4 times each character in every kit.

Dimensions: 3" (7.6 cm)

295 100 368 - BLACK

295 100 369 - LIGHT GREY (not illustrated)

\$34.99



SEA-DOO SURF DECAL

Set of 2. 10" x 8" (25 cm x 20 cm).

295 100 337

\$17.99



SEA-DOO PARADISE DECAL

Set of 2. 10" x 8" (25 cm x 20 cm).

295 100 338

\$17.99



24 UNITS STRIPES DECALS

Package of 24 decals, 4 of each design. Clear vinyl, size of the decals 4.5" x 4.5" (11 cm x 11 cm).

295 100 347

\$129.99



SEA-DOO WAVE DECAL

Set of 2. 10" x 8" (25 cm x 20 cm).

295 100 339

\$17.99



SEA-DOO X PACKAGE DECAL

Set of 2. 10" x 8" (25 cm x 20 cm).

295 100 340

\$17.99



SEA-DOO FLOWER DECAL

Set of 2. 10" x 8" (25 cm x 20 cm).

295 100 341

\$17.99



SEA-DOO TROPICAL DECAL

Set of 2. 10" x 8" (25 cm x 20 cm).

295 100 342

\$17.99



COOL
PRODUCTS



SEA-DOO PORT

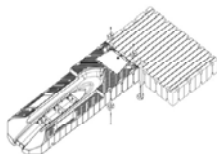
Sea-Doo port made especially for RXP™, RXT™, GTX+ and GTI™ models. Polyethylene construction. Five adjustable rollers. Stainless steel tie-off. Storage compartment. Easy on and off docking. Can be mounted on a regular wooden dock, an EZ Dock system, or as a stand-alone. 179" x 58" x 15" (455 cm x 148 cm x 38 cm). 450 lbs (205 kg).

2060150008 - SILVER
2060150002 - BEIGE
2060150018 - MIXED COLORS
\$2,745.00

3 EASY WAYS TO INSTALL

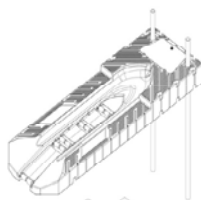
1 - TO AN EXISTING EZ DOCK SYSTEM

Align coupler pockets and install two EZ Dock coupler sets.



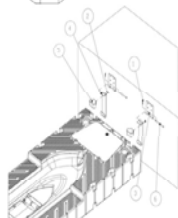
2 - STAND ALONE ON PIPES

Remove the pipe hole covers, install two 3 1/2" (9 cm) galvanized pipes through the holes and slip 4" (10 cm) PVC sleeves with caps over the pipes.



3 - TO A FLOATING DOCK

Install a hinge bracket kit onto the port (available from local EZ Dock Dealer) and then bolt the hinge plates to the dock.



SEA-DOO LICENSE PLATE

Made of stainless steel with mirror finish. Raised letters to give 3D look. Thicker and more durable. Universal to fit all vehicles.

4849630008
\$45.99



SEA-DOO HITCH PLUG

Gives trucks & SUVs custom finished look. Keeps dirt, snow and other debris out of receiver. Fits 2" (5 cm) receivers.

4849530008
\$59.99



SEASCOOTER AQUA RANGER

NEW personal water propeller. Speed up to 2 mph (3.2 km/h). Depth rated to 30' (10 m). Run up to 90 minutes. Various safety features including positive buoyancy, waterproof circuitry, safety grille, auto-power shut off and safety lock. For ages 8 years old and up. For pool use and snorkeling. Rechargeable battery included.

7554400071

\$335.99

RECHARGEABLE BATTERY

12V 4.5Ah battery.

7420000090

\$55.99



SEASCOOTER SUPERCHARGED

Dive propulsion vehicle. Speed up to 3 mph (4.8 km/h). Depth rated to 100' (30m). Run up to 90 minutes. For professional divers. Weight 18 lbs (8.2 kg). Carrying bag and rechargeable battery included.

7554100092

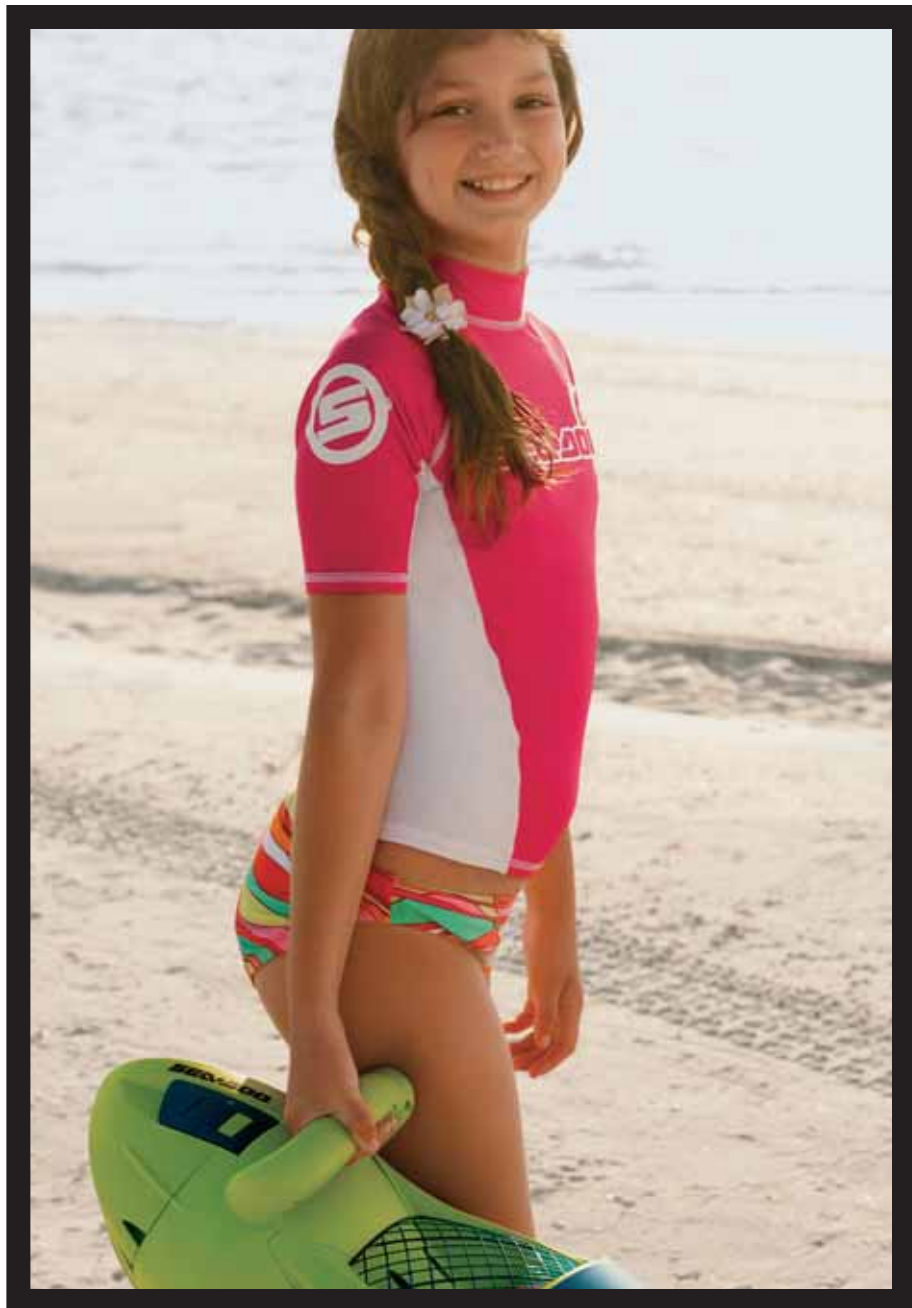
\$659.99

RECHARGEABLE BATTERY

12V 12Ah battery.

7400000090

\$69.99



SEASCOOTER AQUANAUT

Personal water propeller. Speed up to 1.2 mph (2 km/h). Depth rated to 10' (3 m). Run up to 60 minutes. Various safety features including positive buoyancy, safety grille, safety lock. For 8 years old and up and less than 100 lbs (45 kg). For pool only. Rechargeable battery included.

7554300071

\$119.99

RECHARGEABLE BATTERY

12V 4.5Ah battery.

7430000090

\$24.99



SEASCOOTER GTI

Dive propulsion vehicle. Speed up to 2.5 mph (4 km/h). Depth rated to 100' (30 m). Run up to 90 minutes. For adults only. Weight 15.4 lbs (7 kg). Carrying bag and rechargeable battery included.

7554000008

\$479.99

RECHARGEABLE BATTERY

12V 12Ah battery.

7400000090

\$69.99



SEASCOOTER EXPLORER

Dive propulsion vehicle. Speed up to 3.3 mph (5.3 km/h). Depth rated to 160' (50 m). Run up to 120 minutes. For professional divers. Weight 32 lbs (14.5 kg). Variable tri-stage speed control. Rechargeable battery included.

7654100012

\$959.99

RECHARGEABLE BATTERY

12V 24Ah battery POD.

7410000090

\$185.99

2 PERSON CABANA LOUNGE

NEW floating lounge for 2 people. 6.25' (1.90 m). Canopy for sun protection. 2 waterproof audio loud speakers for portable music-playing devices: MP3, iPod, phone. Run up to 7 hours. Includes dual-action hand pump. Battery and charger included.

6465200080

\$349.99



4 PERSON AQUALOUNGE

NEW floating lounge for 4 people. 9' (2.74 m). Mesh bottom surface for toe-dip. 4 waterproof audio loud speakers for music-playing devices: MP3, iPod, phone. Supportive contoured backrest with 4 personal cup holders. Run up to 7 hours. Includes dual-action hand pump. Battery and charger included.

6465400030

\$349.99



6 PERSON AQUALOUNGE

New supersized floating lounge for 6 people. 11' (3.35 m). Mesh bottom surface for toe-dip. Multiple access boarding platforms. 4 waterproof audio loud speakers for music-playing devices: MP3, iPod, phone. Run up to 7 hours. Includes dual-action hand pump. Battery and charger included.

6465600092

\$459.99



MOTORIZED AQUAMATE

NEW motorized inflatable for 1 person not exceeding 155 lbs (70 kg). 4.8' (1.46 m) long. Steering module with master-switch lock. Electronic jet-propeller. Electronic engine. Run up to 60 minutes. Battery and charger included.

6450000010

\$185.99

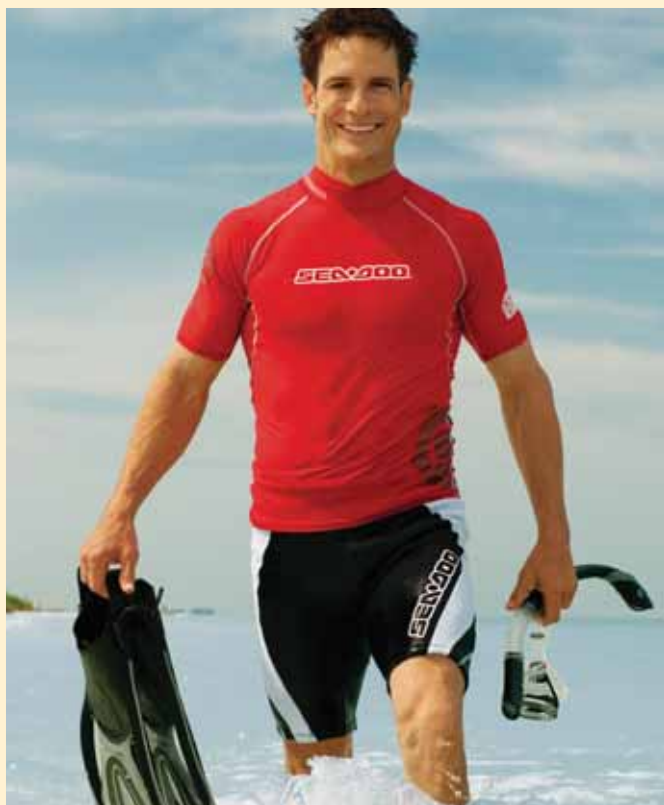


MOTORIZED BOAT

NEW motorized inflatable fun boat for kids. 6.3' (1.92 m) long. For rowing and electronic powered cruising. Electronic outboard control handle. 4 air-chamber construction for safety and stability. Run up to 60 minutes. Includes dual-action hand pump. Battery and charger included.

6451000030

\$185.99



SNORKELING KIT

Easy adjustment mask with silicone skirt and strap. Submersible snorkel with silicone mouthpiece. Open heel adjustable strap fins. Includes a premium travel bag with mesh panels for drainage and ventilation.

MEN'S SIZES

2781600408 – SMALL (4-7)
2781600608 – MEDIUM (7-10)
2781600908 – LARGE (10-13)

\$69.99

LADIES' SIZES

2781800436 – SMALL (5-8)
2781800636 – MEDIUM (8-11)

\$69.99



MEN



LADIES



SEA-DOO FLOATING KEY CHAIN

Neoprene floating key chain. Floats up to 3 keys.

SE8A100080

\$5.99



SEA-DOO FLOATING EYEWEAR RETAINER

Quick dry neoprene floating strap. Holds tight. Perfect for riding on water.

SE08A50030

\$4.99



YOUTH SNORKELING KIT

(Not available in USA)

Easy adjustment mask with silicone skirt and strap. Snorkel with silicone mouthpiece and purge. Open heel adjustable strap fins. Includes a premium travel bag with mesh panels for drainage and ventilation.

2781900480 – SMALL (BOYS 1-3, GIRLS 2-4)
2781900980 – LARGE (BOYS 3-6, GIRLS 4-7)

\$44.99



SEA-DOO WIRELESS AQUA MOUSE

Wireless mouse with floating vehicle replica. PS/2, USB Port.
Compatible with Windows.

SE09A20080

\$45.49



SEA-DOO MOUSE PAD

Mouse pad with no skid sponge rubber back.

SE08A20080

\$7.99



SEA-DOO BISTRO COFFEE MUG

22 oz. (638 ml) blue ceramic coffee mug.

SE08A30080

\$12.99



SEA-DOO BALLPOINT PEN

Blue twist action ballpoint pen.

SE08A10080

\$9.99



SEA-DOO WATER BOTTLE

20 oz. (590 ml) water bottle.

Made in aluminum with screw on lid.

SE09A30008

\$9.99



SEA-DOO STAINLESS STEEL TRAVEL MUG

16 oz. (480 ml) travel mug. Stainless steel interior.
Keeps liquids hot or cold for extended time.

SE08A60008

\$24.99



SEA-DOO LAPTOP BACKPACK

Two main compartments. Yoke style shoulder straps.

Fits most 17" laptops. Built-in audio pocket.

24" x 14" x 7" (60 cm x 35.5 cm x 17.8 cm).

SE09A10090

\$129.99



SEA-DOO SOUND BAG

Sound bag keeps MP3 player safe from water,
sand and dirt. Acts as a speaker. Key hook in the back.

SE08A90012

\$54.99

Never look back. We've got you covered.



Full coverage from parts
to maintenance, beyond
BRP's warranty.

The protection plan you
need for your BRP vehicle.

Visit your authorised BRP dealer today!

ski-doo



SEA-DOO



can-am



brp.com

The B.E.S.T. protection plan covers most eligible Ski-Doo® snowmobiles, Sea-Doo® PWC and sport boats, Can-Am ATVs and roadsters. Certain conditions may apply.
© 2009 Bombardier Recreational Products Inc. All rights reserved. ®™ and the BRP logo are trademarks of Bombardier Recreational Products Inc. or its affiliates.